

ROYAL
WAGENBORG



**S
S
A
C
V**

V-CLASS VESSELS

Vaasaborg	1998
Vlistborg	1999
Voorneborg	1999
Varnebank	2000

GENERAL PARTICULARS

DWAT	8.700
DWCC Summer	8.300
DWCC Winter	8.100
GT	6.130
NT	3.424
Lenght over all	132,23 m
LBPP	123,84 m
Breadth over all	15,87 m
Moulded depth	9,65 m
Draught Summer	7,060 m
Draught Winter	9,910 m
Height WL-HC in ballast	7,70 m
Airdraft in ballast	33,50 m
Built	1998 - 2000
Shipyards	Volharding Shipyards, NL
Flag	Dutch
Homeport	Delfzijl
Ice Class	Finnish/Swedish 1A
Class Notation	I HULL + MACH General cargo ship -heavycargo (150 kN/m ² (nonhomload; 200 kN/m ²)) -nonhomload; Container ship, Unrestricted navigation. + AUT-UMS, + SYS-NEQ-1, MON-SHAFT, ICE CLASS 1A, LASHING

ENGINE

Main engine	Wartsila 6L38, 3960 kW at 600 RPM
Propeller	Pitch
Bowthruster	600 kW

HOLDS/HATCHES

Type of holds	Fully openhatch - no understow Fully box and double skinned Fully square - except outer shape
Cubic Capacity hold	454.000 cft
Capacity hold 1	190.000 cft
Capacity hold 2	264.000 cft
Dimensions hold 1	39,96 x 13,20 x 10,84 m
Dimensions hold 2	52,54 x 13,20 x 10,84 m
Hatchcover type	Coops and Nieborg Pontoons hatchcover system

Max pressure Tanktop	15,00 mts/m ²
Max pressure tweendeck	3,50 mts/m ²
Max pressure weatherdeck	1,75 mts/m ²

CARGO CRANES

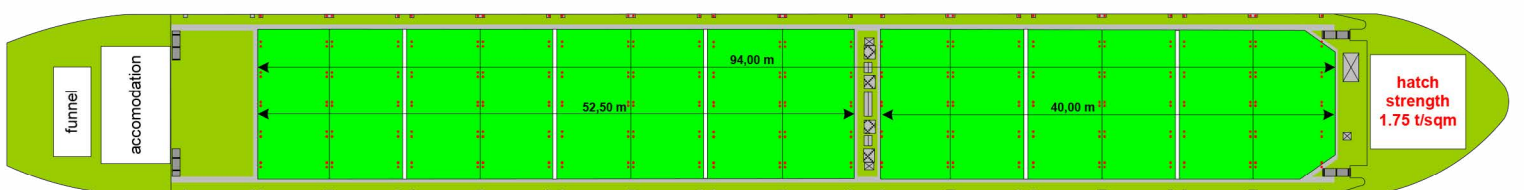
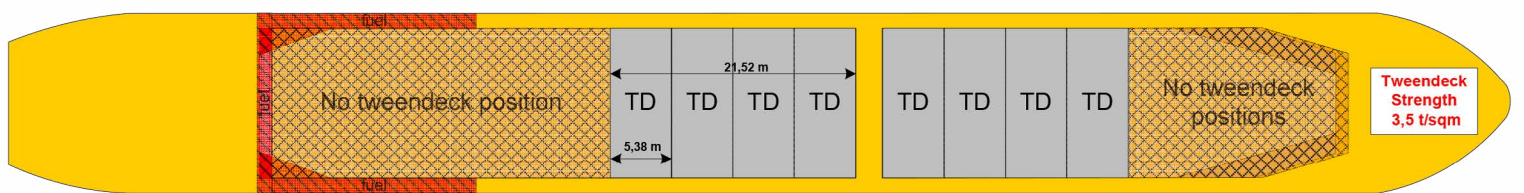
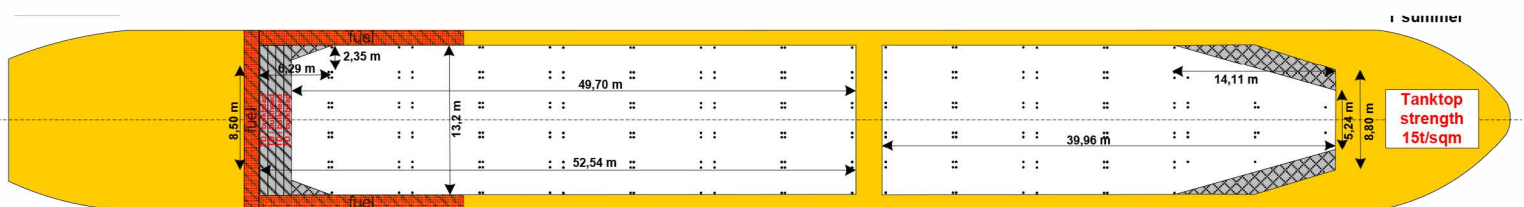
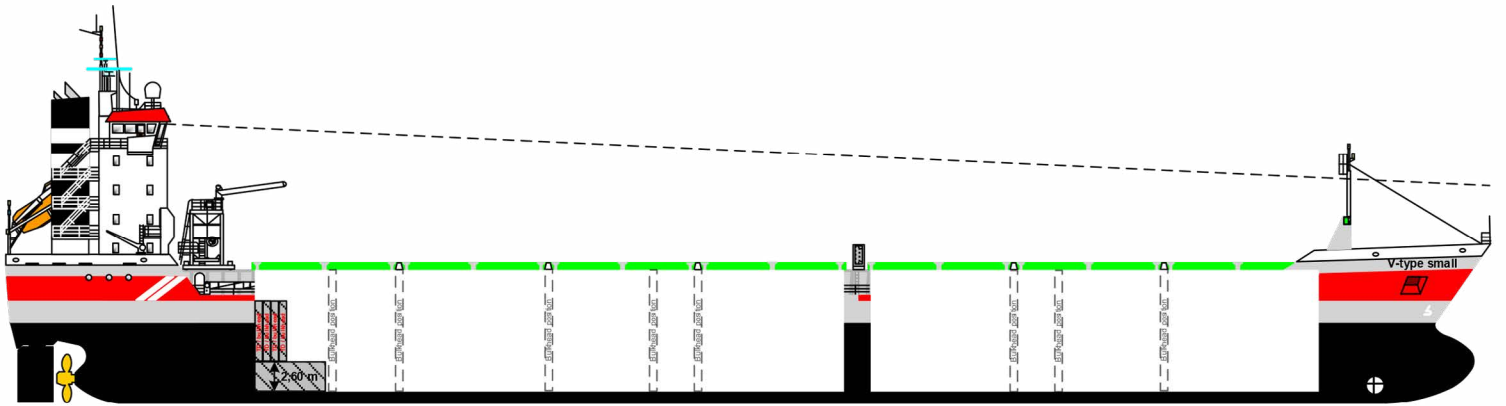
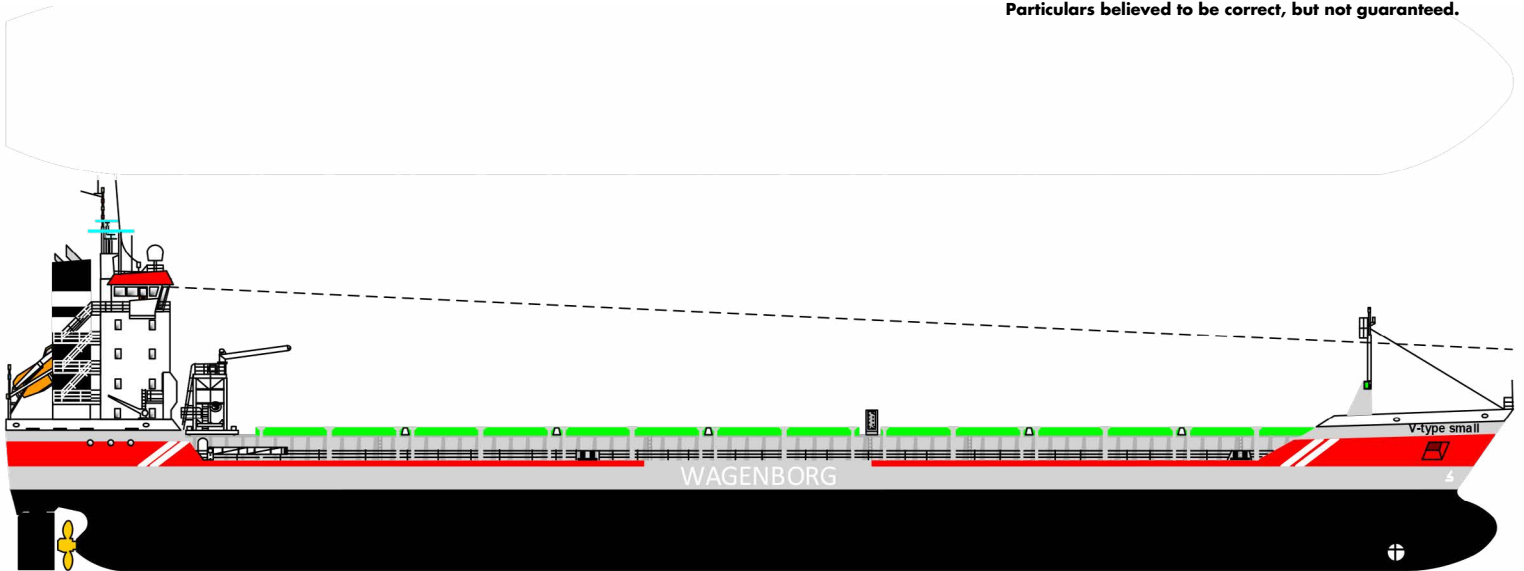
Gearless / geared	Gearless
-------------------	----------

FUEL OIL SPECIFICATION

HFO as per ISO 8217:2010 RMG 380
MGO as per ISO 8217:2010 DMA
Within: ECA area t/c operation to be responsible for sulphur limit compliance



Particulars believed to be correct, but not guaranteed.



Wagenborg Shipping is a member of Royal Wagenborg. Founded in 1898, the company continuously invests in various means of transport to serve the needs of a broad variety of customers by sea, shallow water and road offering a complete chain of transport.

Wagenborg companies are, amongst others, involved in shipping, stevedoring, forwarding, crane rental, heavy lifting, heavy transport, oil- and gas related services, towage and passenger services. Our integrated logistics solutions are flexible and reliable, provided by our dedicated crew of more than 3,000 employees.

Royal Wagenborg has identified quality, health, safety and the environment as key factors. Wagenborg Shipping manages its quality according to the ISO 9001, ISO 14001 and AEO. Our cargo vessels are ISM and ISPS-certified.

Head office:

WAGENBORG SHIPPING B.V.

Marktstraat 10, 9934 CK Delfzijl
P.O. Box 14, 9930 AA Delfzijl
The Netherlands
T +31 596 636 911
E chartering@wagenborg.com

Agency / Clearance at Delfzijl, Eemshaven and Groningen:

WAGENBORG AGENCIES B.V.

Handelskade Oost 21, 9934 AR Delfzijl, The Netherlands
P.O. Box 14, 9930 AA Delfzijl
T +31 596 636 254
E agency@wagenborg.com

Agency/Clearance at Amsterdam, Beverwijk and Umuiden:

WAGENBORG AGENCIES B.V.

Vredeweg 36A, 1505 HH Zaandam, The Netherlands
T +31 75 615 98 32
E agency.amsterdam@wagenborg.com

Agency/Clearance at Rotterdam, Dordrecht and Moerdijk:

WAGENBORG AGENCIES B.V.

Ridderhaven 27, 2984 BT Ridderkerk, The Netherlands
T +31 180 465 215
E agency.rotterdam@wagenborg.com

WAGENBORG STEVEDORING B.V.

Handelskade Oost 21, 9934 AR Delfzijl, The Netherlands
P.O. Box 14, 9930 AA Delfzijl
T +31 596 636 911
E stevedoring@wagenborg.com

WAGENBORG PROJECTS & LOGISTICS B.V.

Marktstraat 10, 9934 CK Delfzijl, The Netherlands
P.O. Box 14, 9930 AA Delfzijl
T +31 596 636 966
E logistic@wagenborg.com

WAGENBORG PROJECTS & LOGISTICS B.V.

Ridderhaven 27, 2984 BT Ridderkerk, The Netherlands
T +31 180 41 1169
E logistic@wagenborg.com

Branch office Sweden:

WAGENBORG SHIPPING SWEDEN AB

Hans Michelsensgatan 1B
P.O. Box 207, SE-201 22 Malmö, Sweden
T +46 409 37 100
E chartering.sweden@wagenborg.se

Branch office North America:

WAGENBORG SHIPPING NORTH AMERICA INC.

507 Place d'Armes, Suite 2100
Montreal, Quebec
H2Y 2W8
Canada
T +1 514 288 8282
E info@wagenborgna.ca

Branche office Spain:

Wave Shipping

Calle Lira, N° 1. Esc. Izq., 1° B.
28007 Madrid, Spain
T +34 917 253 763
E wave@waveship.com

