



ROYAL  
**WAGENBORG**



S  
S  
A  
L  
R-CLAS

### R-CLASS VESSELS

Reestborg	2013
Reggeborg	2014
Roerborg	2014

### GENERAL PARTICULARS

DWAT	23.249
DWCC Summer	22.000
DWCC Winter	21.000
GT	14.141
NT	6.853

Lenght over all	169,75 m
LBPP	165,97 m
Breadth over all	20,40 m
Moulded depth	13,75 m
Draught Summer	9,718 m
Draught Winter	9,516 m
Height WL-HC in ballast	10,30 m
Airdraft in ballast	32,54 m

Built	2013 - 2014
Shipyard	Ferus Smit, NL
Flag	Dutch
Homeport	Delfzijl
Ice Class	Finnish/Swedish 1A, Class 1 HULL MACH,
Class Notation	General cargo ship, containership, Unrestricted navigation, AUT-UMS ICE CLASS 1A, SYS-NEQ

### ENGINE

Main engine	Wärtsilä Diesel, type 9L32, MCR 4.500 kW at 750 rpm
Propeller	Single CPP, 4-blade with nozzle, 4.750mm, 110 rpm
Bowthruster	860 kW, fixed pitch propeller, electrically driven

### INSURANCE

Classification	Bureau Veritas
P&I Club	Noord Nederlandse P&I Club

### HOLDS/HATCHES

Type of holds	Box
Cubic Capacity Hold	945.000 cft
Capacity hold 1	457.000 cft
Capacity hold 2	488.000 cft
Dimensions hold 1	60,59 x 17,00 x 13,55 m
Dimensions hold 2	60,59 x 17,00 x 13,55 m
Hatchcover type	Coops & Nieborg pontoons

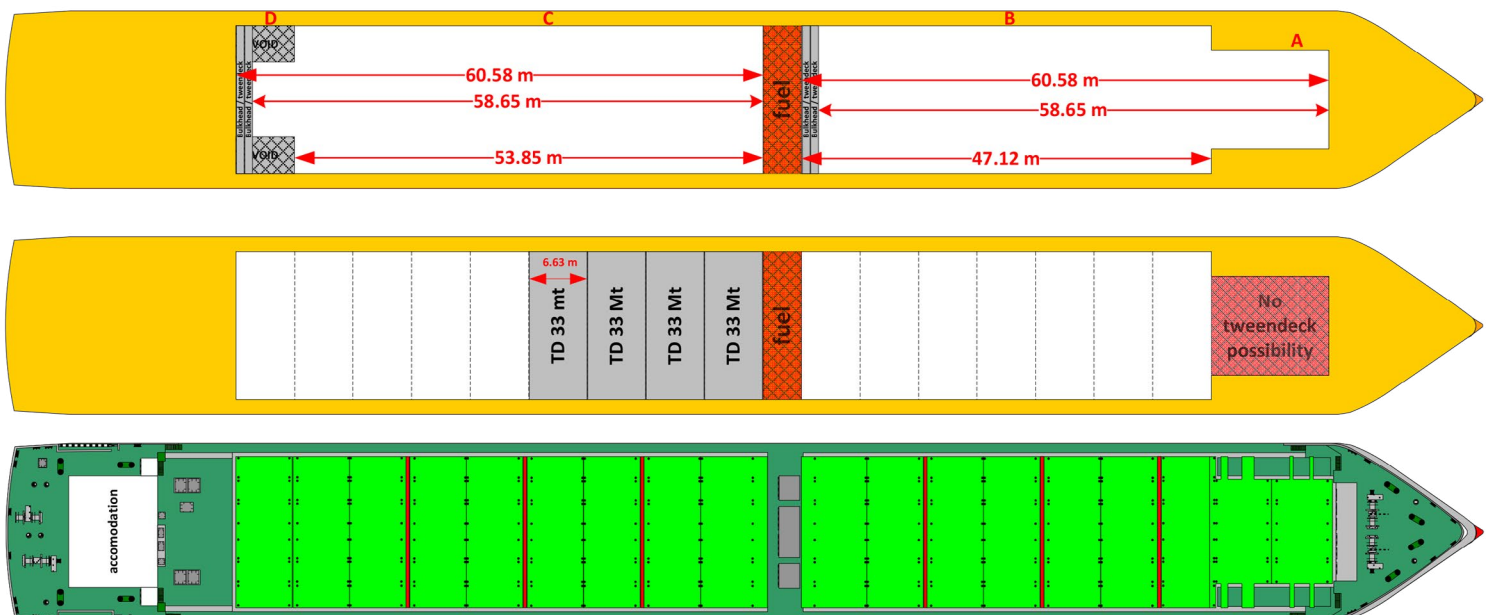
Max pressure Tanktop	15,00 mts/m2
Max pressure weatherdeck	1,75 mts/m2

### CARGO CRANES

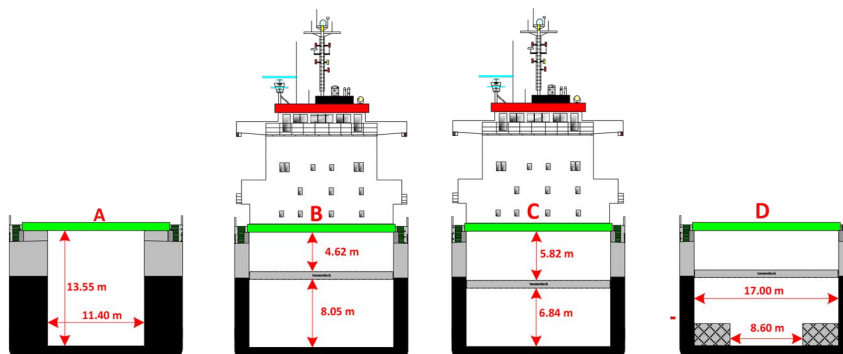
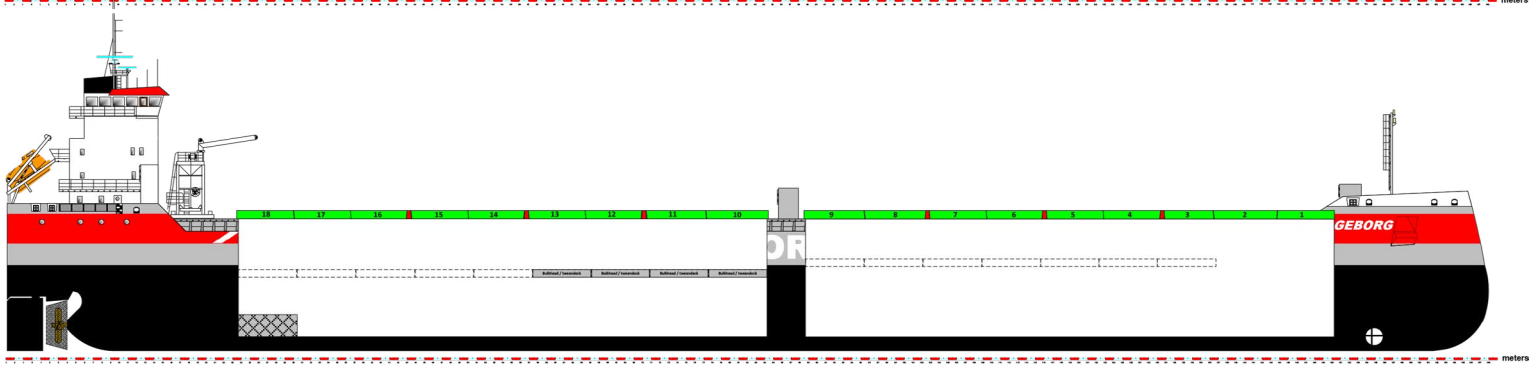
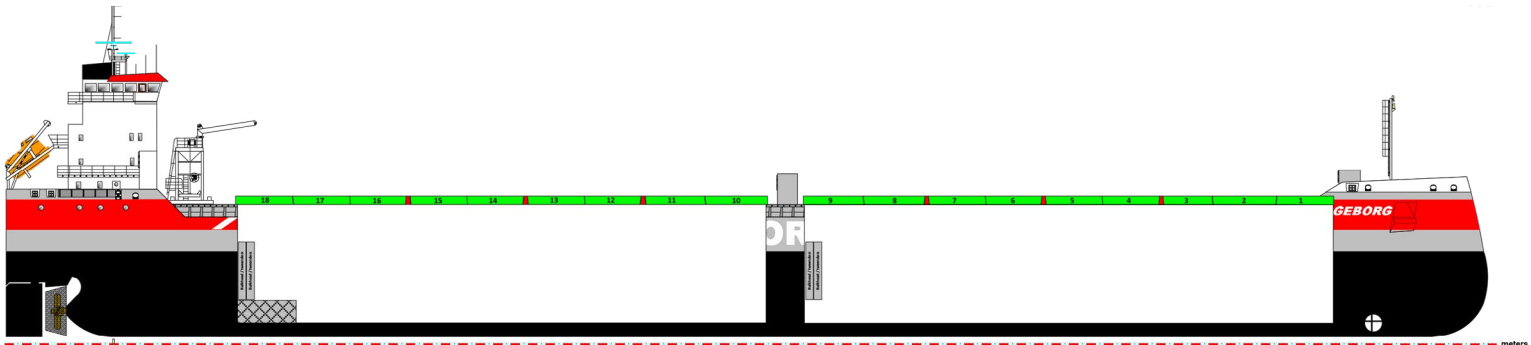
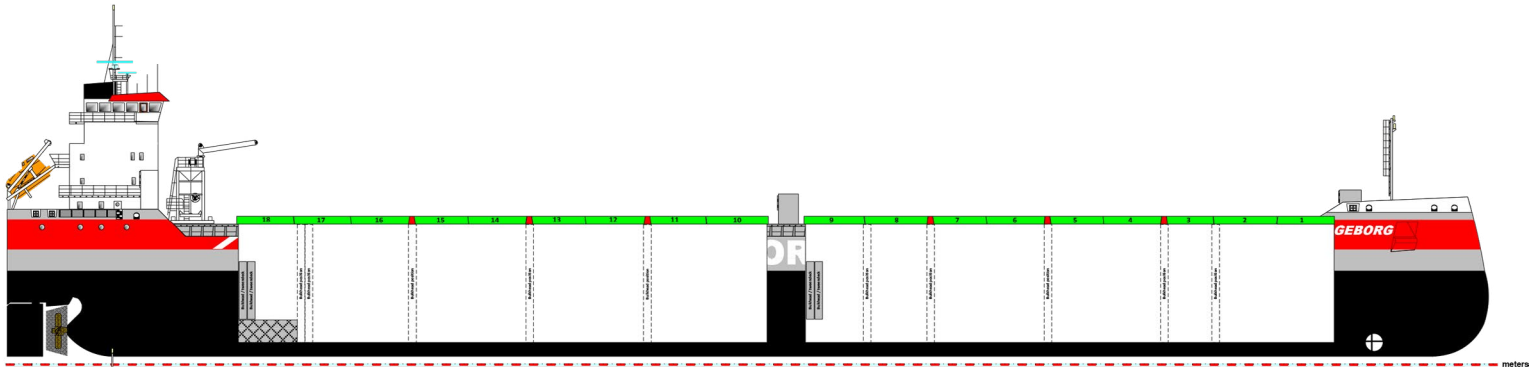
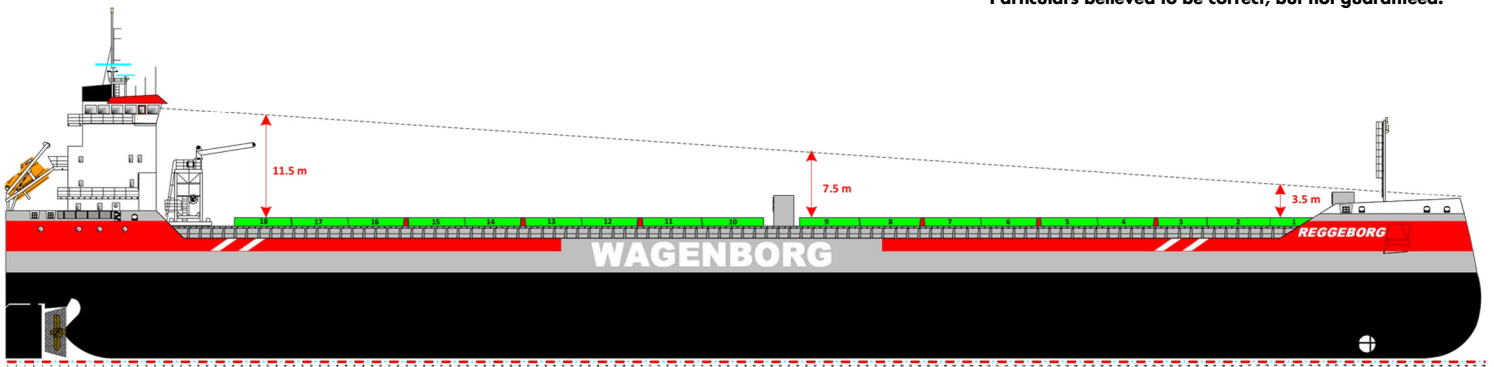
Gearless / geared	Gearless
-------------------	----------

### FUEL OIL SPECIFICATION

HFO as per ISO 8217:2010 RMG 380
MGO as per ISO 8217:2010 DMA
Within: ECA area t/c operation to be responsible for sulphur limit compliance



Particulars believed to be correct, but not guaranteed.



Wagenborg Shipping is a member of Royal Wagenborg. Founded in 1898, the company continuously invests in various means of transport to serve the needs of a broad variety of customers by sea, shallow water and road offering a complete chain of transport.

Wagenborg companies are, amongst others, involved in shipping, stevedoring, forwarding, crane rental, heavy lifting, heavy transport, oil- and gas related services, towage and passenger services. Our integrated logistics solutions are flexible and reliable, provided by our dedicated crew of more than 3,000 employees.

Royal Wagenborg has identified quality, health, safety and the environment as key factors. Wagenborg Shipping manages its quality according to the ISO 9001, ISO 14001 and AEO. Our cargo vessels are ISM and ISPS-certified.

Head office:

**WAGENBORG SHIPPING B.V.**

Marktstraat 10, 9934 CK Delfzijl  
P.O. Box 14, 9930 AA Delfzijl  
The Netherlands  
T +31 596 636 911  
E chartering@wagenborg.com

Agency / Clearance at Delfzijl, Eemshaven and Groningen:

**WAGENBORG AGENCIES B.V.**

Handelskade Oost 21, 9934 AR Delfzijl, The Netherlands  
P.O. Box 14, 9930 AA Delfzijl  
T +31 596 636 254  
E agency@wagenborg.com

Agency/Clearance at Amsterdam, Beverwijk and Umuiden:

**WAGENBORG AGENCIES B.V.**

Vredeweg 36A, 1505 HH Zaandam, The Netherlands  
T +31 75 615 98 32  
E agency.amsterdam@wagenborg.com

Agency/Clearance at Rotterdam, Dordrecht and Moerdijk:

**WAGENBORG AGENCIES B.V.**

Ridderhaven 27, 2984 BT Ridderkerk, The Netherlands  
T +31 180 465 215  
E agency.rotterdam@wagenborg.com

**WAGENBORG STEVEDORING B.V.**

Handelskade Oost 21, 9934 AR Delfzijl, The Netherlands  
P.O. Box 14, 9930 AA Delfzijl  
T +31 596 636 911  
E stevedoring@wagenborg.com

**WAGENBORG PROJECTS & LOGISTICS B.V.**

Marktstraat 10, 9934 CK Delfzijl, The Netherlands  
P.O. Box 14, 9930 AA Delfzijl  
T +31 596 636 966  
E logistic@wagenborg.com

**WAGENBORG PROJECTS & LOGISTICS B.V.**

Ridderhaven 27, 2984 BT Ridderkerk, The Netherlands  
T +31 180 41 1169  
E logistic@wagenborg.com

Branch office Sweden:

**WAGENBORG SHIPPING SWEDEN AB**

Hans Michelsensgatan 1B  
P.O. Box 207, SE-201 22 Malmö, Sweden  
T +46 409 37 100  
E chartering.sweden@wagenborg.se

Branch office North America:

**WAGENBORG SHIPPING NORTH AMERICA INC.**

507 Place d'Armes, Suite 2100  
Montreal, Quebec  
H2Y 2W8  
Canada  
T +1 514 288 8282  
E info@wagenborgna.ca

Branche office Spain:

**Wave Shipping**

Calle Lira, N° 1. Esc. Izq., 1° B.  
28007 Madrid, Spain  
T +34 917 253 763  
E wave@waveship.com

