



ROYAL
WAGENBORG

S
S
A
C
I
X
L



LxI-CLASS VESSELS

Leuveborg	2008
Lenneborg	2008
Loenerborg	2009
Looborg	2008

GENERAL PARTICULARS

DWAT	8.101 t
DWCC Summer	7.500 t
DWCC Winter	7.300 t
GT	5.598 t
NT	2.882 t
Lenght over all	108,24 m
LBPP	103,90 m
Breadth over all	18,20 m
Moulded depth	9,00 m
Draught Summer	7,010 m
Draught Winter	6,864 m
Height WL-HC in ballast	8,90 m
Airdraft in ballast	28,50 m
Built	2008 - 2009
Flag	Dutch
Homeport	Delfzijl
Ice Class	Finnish/Swedish 1B
Class Notation	DNV-GL +100A5 E2, Multi-Purpose Dry Cargo Vessel, "G" strengened for heavy cargoes, SOLAS II-2, Reg. 19, BWM-S, +MC E1 Aut equipped for carriage of

ENGINE

Main engine	MAK 8M32C
	3.000 kW

INSURANCE

Classification	DNV-GL
P&I Club	North of England P&I Association

HOLDS/HATCHES

Type of holds	Box
Cubic Capacity Hold	360.202 cft
Capacity hold 1	97.113 cft
Capacity hold 2	135.959 cft
Capacity hold 3	127.130 cft
Dimensions hold 1	17,50 x 15,20 x 9,40 m
Dimensions hold 2	25,90 x 15,20 x 9,40 m
Dimensions hold 3	25,20 x 15,20 x 9,40 m
Hatchcover type	TTS Transfolding hatch covers

Max pressure Tanktop	15,00 mts/m ²
Max pressure weatherdeck	3,5 mts/m ² - hold 1
	2,2 mts/m ² - holds 2/3

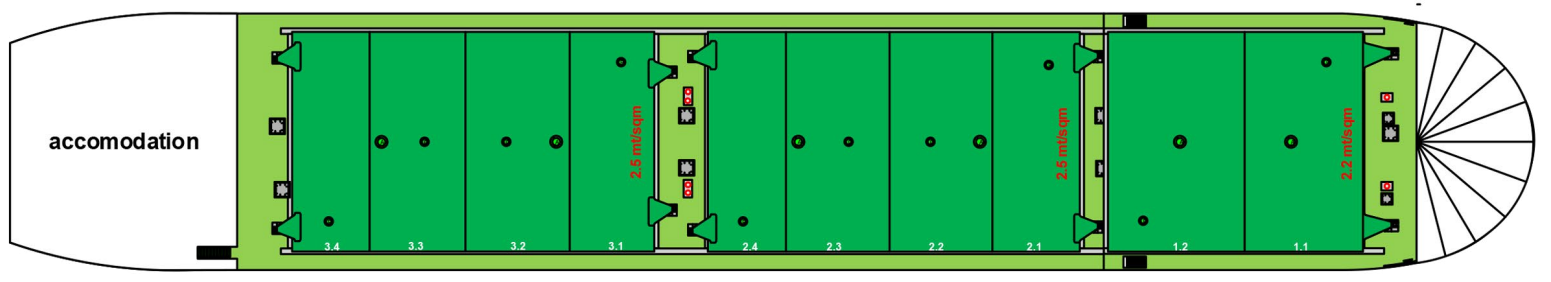
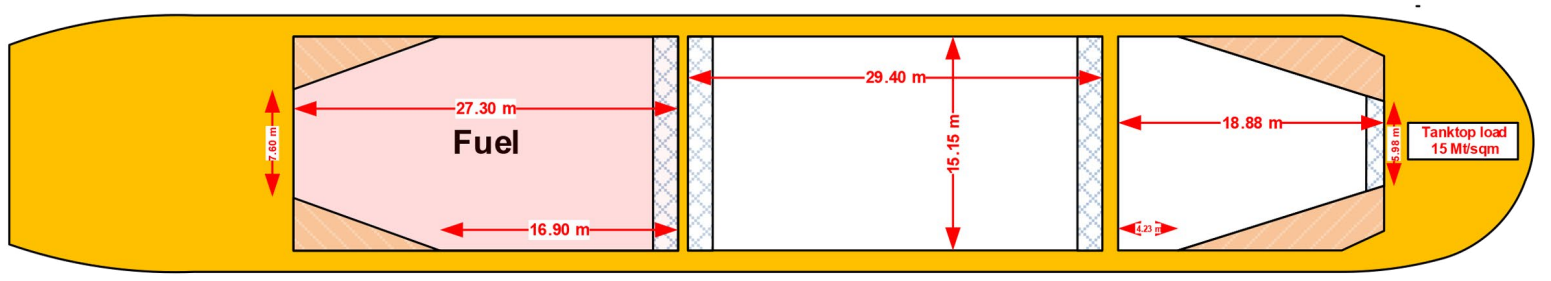
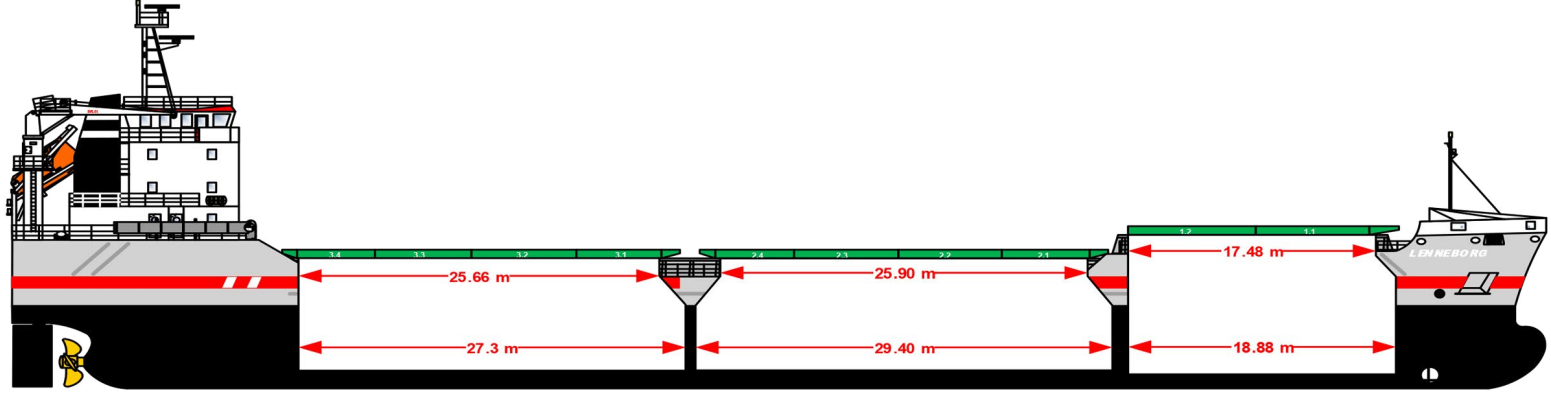
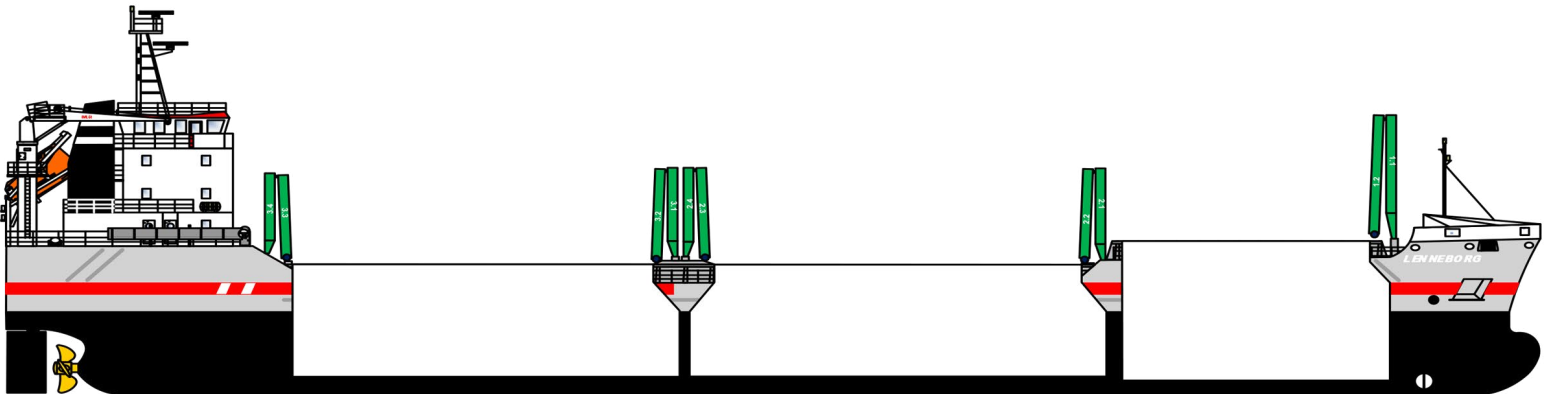
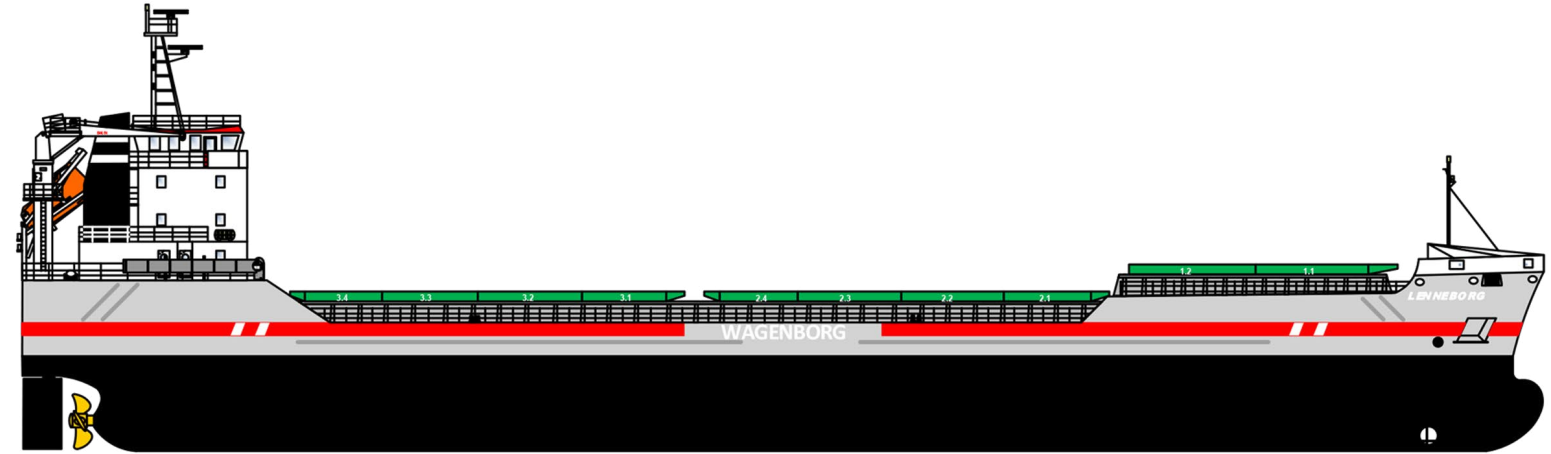
CARGO CRANES

Gearless / geared	Gearless
-------------------	----------

FUEL OIL SPECIFICATION

HFO as per ISO 8217:2010 RMG 380
 MGO as per ISO 8217:2010 DMA
 Within: ECA area t/c operation to be responsible for sulphur limit compliance

Particulars believed to be correct, but not guaranteed.



Wagenborg Shipping is a member of Royal Wagenborg. Founded in 1898, the company continuously invests in various means of transport to serve the needs of a broad variety of customers by sea, shallow water and road offering a complete chain of transport.

Wagenborg companies are, amongst others, involved in shipping, stevedoring, forwarding, crane rental, heavy lifting, heavy transport, oil- and gas related services, towage and passenger services. Our integrated logistics solutions are flexible and reliable, provided by our dedicated crew of more than 3,000 employees.

Royal Wagenborg has identified quality, health, safety and the environment as key factors. Wagenborg Shipping manages its quality according to the ISO 9001, ISO 14001 and AEO. Our cargo vessels are ISM and ISPS-certified.

Head office:

WAGENBORG SHIPPING B.V.

Marktstraat 10, 9934 CK Delfzijl
P.O. Box 14, 9930 AA Delfzijl
The Netherlands
T +31 596 636 911
E chartering@wagenborg.com

Agency / Clearance at Delfzijl, Eemshaven and Groningen:

WAGENBORG AGENCIES B.V.

Handelskade Oost 21, 9934 AR Delfzijl, The Netherlands
P.O. Box 14, 9930 AA Delfzijl
T +31 596 636 254
E agency@wagenborg.com

Agency/Clearance at Amsterdam, Beverwijk and Umuiden:

WAGENBORG AGENCIES B.V.

Vredeweg 36A, 1505 HH Zaandam, The Netherlands
T +31 75 615 98 32
E agency.amsterdam@wagenborg.com

Agency/Clearance at Rotterdam, Dordrecht and Moerdijk:

WAGENBORG AGENCIES B.V.

Ridderhaven 27, 2984 BT Ridderkerk, The Netherlands
T +31 180 465 215
E agency.rotterdam@wagenborg.com

WAGENBORG STEVEDORING B.V.

Handelskade Oost 21, 9934 AR Delfzijl, The Netherlands
P.O. Box 14, 9930 AA Delfzijl
T +31 596 636 911
E stevedoring@wagenborg.com

WAGENBORG PROJECTS & LOGISTICS B.V.

Marktstraat 10, 9934 CK Delfzijl, The Netherlands
P.O. Box 14, 9930 AA Delfzijl
T +31 596 636 966
E logistic@wagenborg.com

WAGENBORG PROJECTS & LOGISTICS B.V.

Ridderhaven 27, 2984 BT Ridderkerk, The Netherlands
T +31 180 41 1169
E logistic@wagenborg.com

Branch office Sweden:

WAGENBORG SHIPPING SWEDEN AB

Hans Michelsengatan 1B
P.O. Box 207, SE-201 22 Malmö, Sweden
T +46 409 37 100
E chartering.sweden@wagenborg.se

Branch office North America:

WAGENBORG SHIPPING NORTH AMERICA INC.

507 Place d'Armes, Suite 2100
Montreal, Quebec
H2Y 2W8
Canada
T +1 514 288 8282
E info@wagenborgna.ca

Branche office Spain:

Wave Shipping

Calle Lira, N° 1. Esc. Izq., 1° B.
28007 Madrid, Spain
T +34 917 253 763
E wave@waveship.com

