



ROYAL
WAGENBORG



S
S
A
C
-
X
E

ExI-CLASS VESSELS

Elkeborg	2011
Eeborg	2012
Exeborg	2013

GENERAL PARTICULARS

DWAT	12.004
DWCC Summer	10.900
DWCC Winter	10.600
GT	7.680
NT	3.846

Lenght over all	144,56 m
LBPP	138,20 m
Breadth over all	15,87 m
Moulded depth	11,15 m
Draught Summer	8,00 m
Draught Winter	7,85 m
Height WL-HC in ballast	9,25 m
Airdraft in ballast	30,35 m

Built	2011 - 2013
Shipyard	Niestern Sander, NL
Flag	Dutch
Homeport	Delfzijl
Ice Class	Finnish/Swedish 1A
Class Notation	1 HULL+MAC, Unrestricted Navigation, General Cargo ship equipped for carriage of containers, + AUT-UMS, Ice Class 1A, Heavy Cargo, SHAFT-MON, SYS-NEQ

ENGINE

Main engine	MAK 9L32C, 4.500 kW
Propeller	Single ccp, 4 blades, 4.200mm
Bowthruster	750 kW

INSURANCE

Classification	Bureau Veritas
P&I Club	Noord Nederlandse P&I Club: Eeborg, Exeborg UK P&I Club: Elkeborg

HOLDS/HATCHES

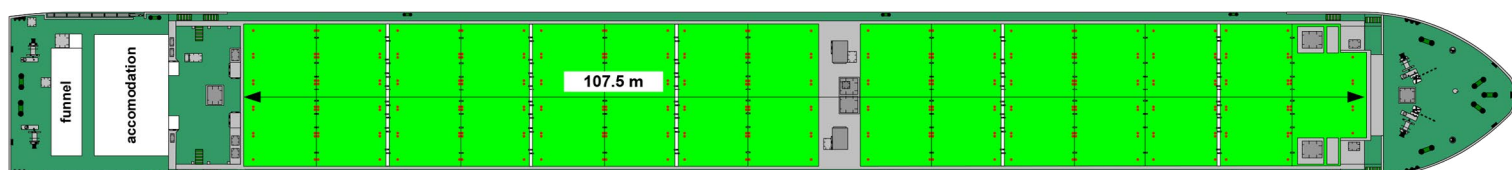
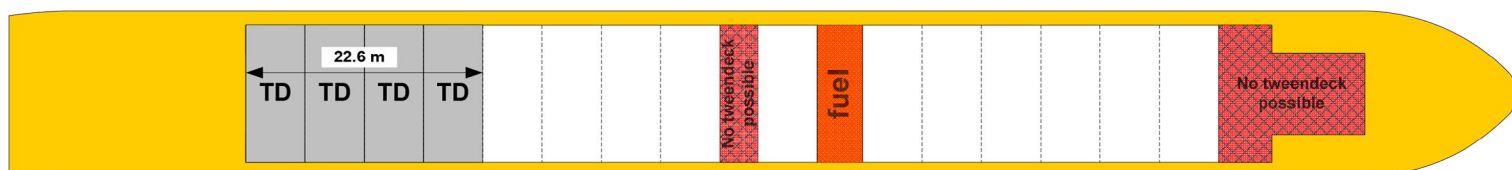
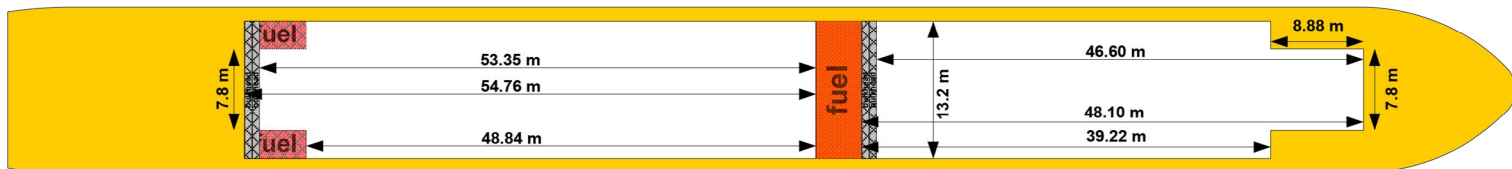
Type of holds	Fully openhatch - no understow Fully box and double skinned Fully square - except outer shape
Cubic Capacity hold	523.237 cft
Capacity hold 1	235.558 cft
Capacity hold 2	287.679 cft
Dimensions hold 1	48,10 x 13,20 x 11,42 m
Dimensions hold 2	54,76 x 13,20 x 11,42 m
Hatchcover type	Coops and Nieborg pontoon hatchcover system
Max pressure Tanktop	15,00 mts/m ²
Max pressure weatherdeck	1,75 mts/m ²

CARGO CRANES

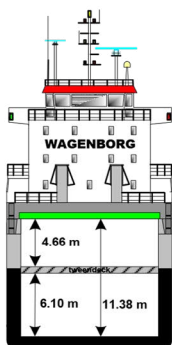
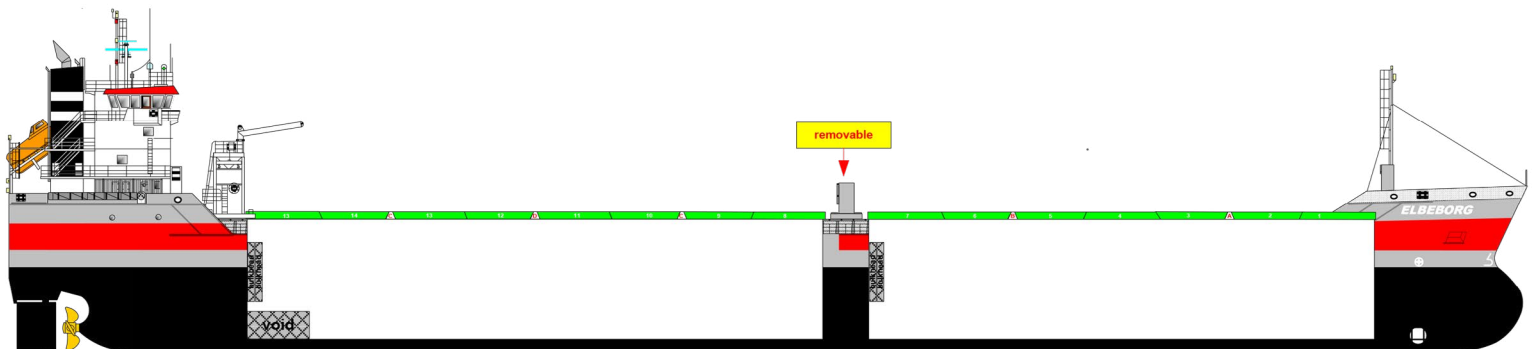
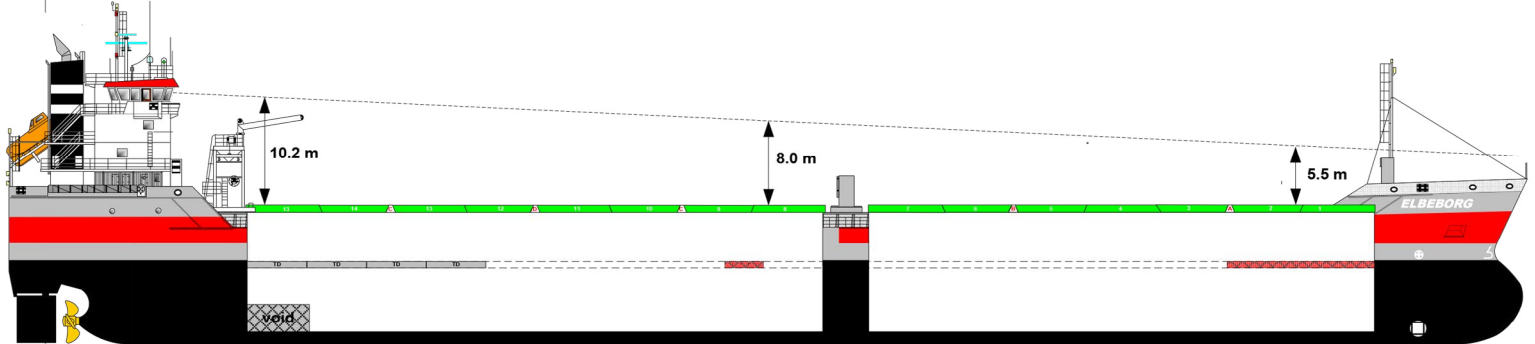
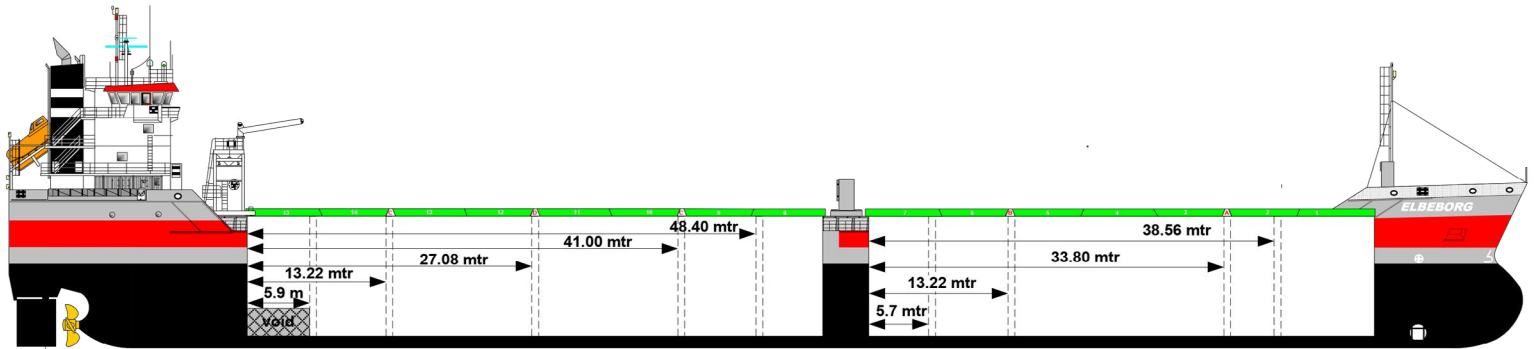
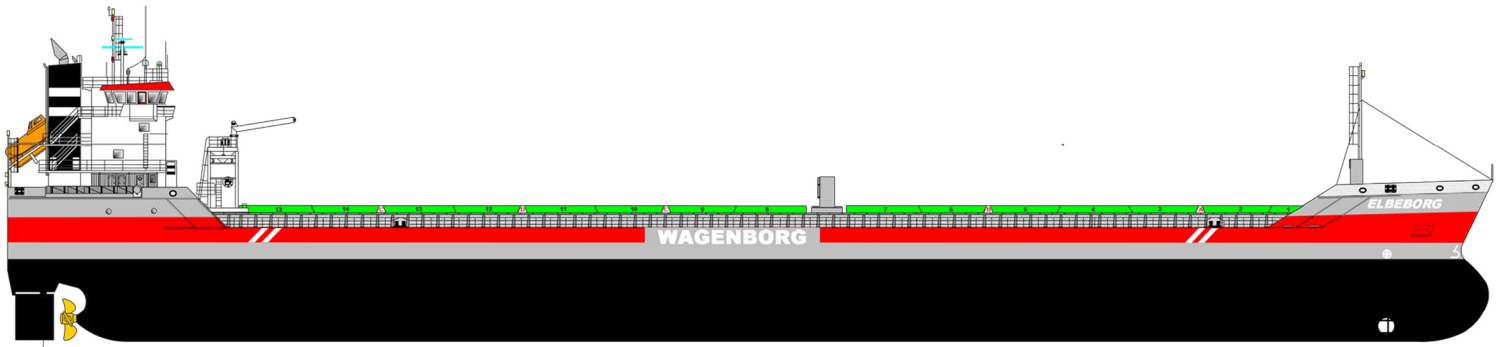
Gearless / geared	Gearless
-------------------	----------

FUEL OIL SPECIFICATION

HFO as per ISO 8217:2010 RMG 380
MGO as per ISO 8217:2010 DMA
Within: ECA area t/c operation to be responsible for sulphur
limit compliance



Particulars believed to be correct, but not guaranteed.



Wagenborg Shipping is a member of Royal Wagenborg. Founded in 1898, the company continuously invests in various means of transport to serve the needs of a broad variety of customers by sea, shallow water and road offering a complete chain of transport.

Wagenborg companies are, amongst others, involved in shipping, stevedoring, forwarding, crane rental, heavy lifting, heavy transport, oil- and gas related services, towage and passenger services. Our integrated logistics solutions are flexible and reliable, provided by our dedicated crew of more than 3,000 employees.

Royal Wagenborg has identified quality, health, safety and the environment as key factors. Wagenborg Shipping manages its quality according to the ISO 9001, ISO 14001 and AEO. Our cargo vessels are ISM and ISPS-certified.

Head office:

WAGENBORG SHIPPING B.V.

Marktstraat 10, 9934 CK Delfzijl
P.O. Box 14, 9930 AA Delfzijl
The Netherlands
T +31 596 636 911
E chartering@wagenborg.com

Agency / Clearance at Delfzijl, Eemshaven and Groningen:

WAGENBORG AGENCIES B.V.

Handelskade Oost 21, 9934 AR Delfzijl, The Netherlands
P.O. Box 14, 9930 AA Delfzijl
T +31 596 636 254
E agency@wagenborg.com

Agency/Clearance at Amsterdam, Beverwijk and Umuiden:

WAGENBORG AGENCIES B.V.

Vredeweg 36A, 1505 HH Zaandam, The Netherlands
T +31 75 615 98 32
E agency.amsterdam@wagenborg.com

Agency/Clearance at Rotterdam, Dordrecht and Moerdijk:

WAGENBORG AGENCIES B.V.

Ridderhaven 27, 2984 BT Ridderkerk, The Netherlands
T +31 180 465 215
E agency.rotterdam@wagenborg.com

WAGENBORG STEVEDORING B.V.

Handelskade Oost 21, 9934 AR Delfzijl, The Netherlands
P.O. Box 14, 9930 AA Delfzijl
T +31 596 636 911
E stevedoring@wagenborg.com

WAGENBORG PROJECTS & LOGISTICS B.V.

Marktstraat 10, 9934 CK Delfzijl, The Netherlands
P.O. Box 14, 9930 AA Delfzijl
T +31 596 636 966
E logistic@wagenborg.com

WAGENBORG PROJECTS & LOGISTICS B.V.

Ridderhaven 27, 2984 BT Ridderkerk, The Netherlands
T +31 180 41 1169
E logistic@wagenborg.com

Branch office Sweden:

WAGENBORG SHIPPING SWEDEN AB

Hans Michelsengatan 1B
P.O. Box 207, SE-201 22 Malmö, Sweden
T +46 409 37 100
E chartering.sweden@wagenborg.se

Branch office North America:

WAGENBORG SHIPPING NORTH AMERICA INC.

507 Place d'Armes, Suite 2100
Montreal, Quebec
H2Y 2W8
Canada
T +1 514 288 8282
E info@wagenborgna.ca

Branche office Spain:

Wave Shipping

Calle Lira, N° 1. Esc. Izq., 1° B.
28007 Madrid, Spain
T +34 917 253 763
E wave@waveship.com

