

ROYAL  
**WAGENBORG**



**MAX  
W  
S  
A  
E**

### EASYMAX VESSEL

Egbert Wagenborg 2017  
EasyMax 2 tbd

#### GENERAL PARTICULARS

DWAT	14.200 t
DWCC Summer	13.800 t
DWCC Winter	13.600 t
DWT open top	11.000 t
GT	8.827
NT	4.475

Lenght over all	149,95 m
Length bpp	146,90 m
Breadth over all	15,90 m
Moulded depth	12,20 m
Draught Summer	8,60 m
Draught Winter	8,42 m
Draught tropical	8,80 m
Draught open-top	7,20 m
Height WL-HC in ballast	9,50 m
Airdraft in ballast	34,23 m

Built	2017
Shipyard	Royal Niestern Sander
Flag	Dutch
Homeport	Delfzijl
Ice Class	Finnish/Swedish 1A
Class Notation	Bureau Veritas I + HULL +MACH, Unrestricted Navigation, General cargo Ship, + AUT-UMS, ICE CLASS 1A, Heavy Cargo (15t/ m2), SHAFT-MON, SYS- NEQ, Open top

#### INSURANCE

Classification	Bureau Veritas
P&I Club	Standard Steam Owner's P&I Association

#### ENGINE

Main engine	MAK 6M32C
Power main engine	2.999 kW
Auxiliary engine	2 x CAT C18
Power aux engine	2 x 360 kW
Ducted propellers	CAT propulsion Ø 4200 mm cpp in nozzle
Bowthruster	750 kW
Speed	11,5 knots

#### HOLDS/HATCHES

Type of holds	Fully box
Cubic Capacity	625.000 cft
Capacity hold 1	261.000 cft
Capacity hold 2	364.000 cft
Dimensions hold 1	47,36 x 13,50 x 12,15 m
Dimensions hold 2	64,38 x 13,50 x 12,15 m
Hatchcover type	Coops & Nieborg pontoon hatches

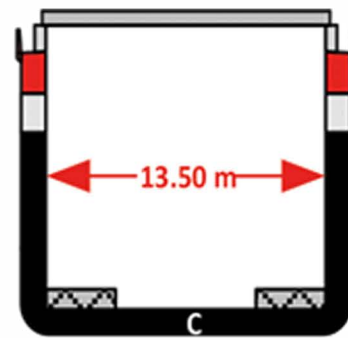
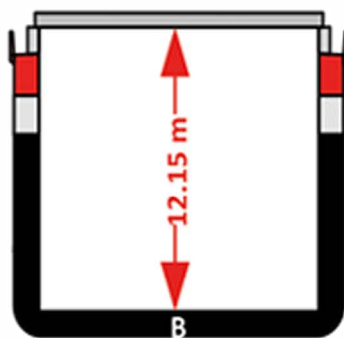
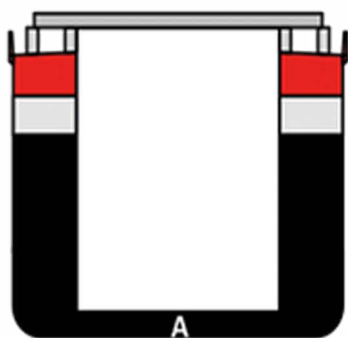
Max pressure Tanktop	15,00 mts/m <sup>2</sup>
Max pressure weatherdeck	1,75 mts/m <sup>2</sup>

#### CARGO CRANES

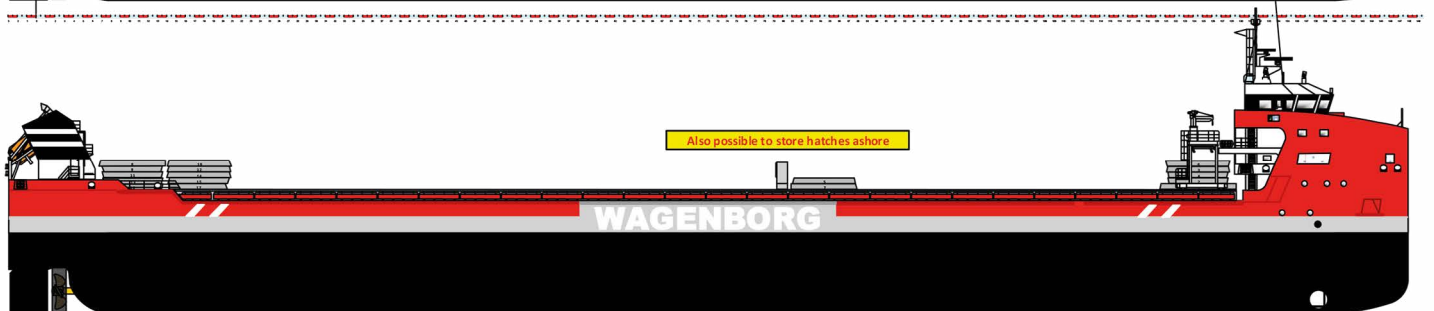
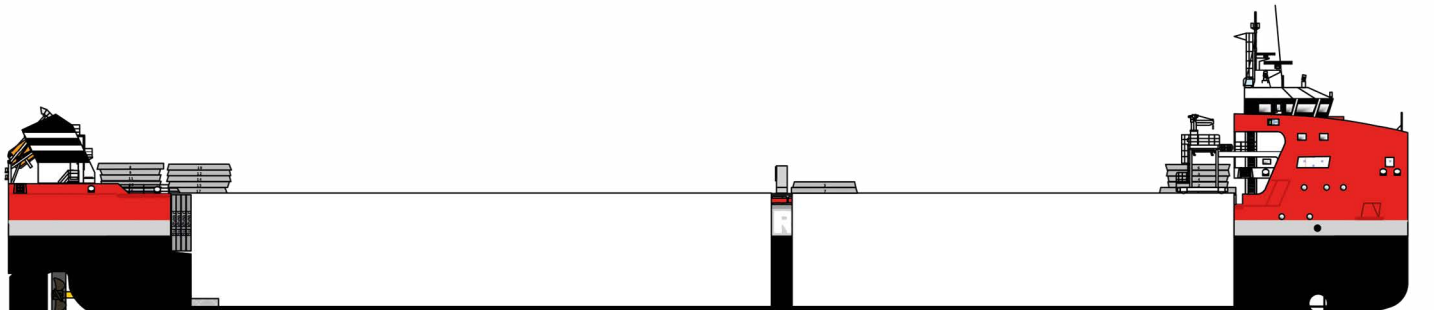
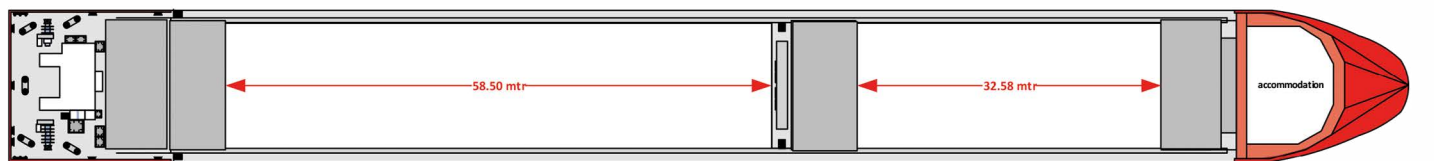
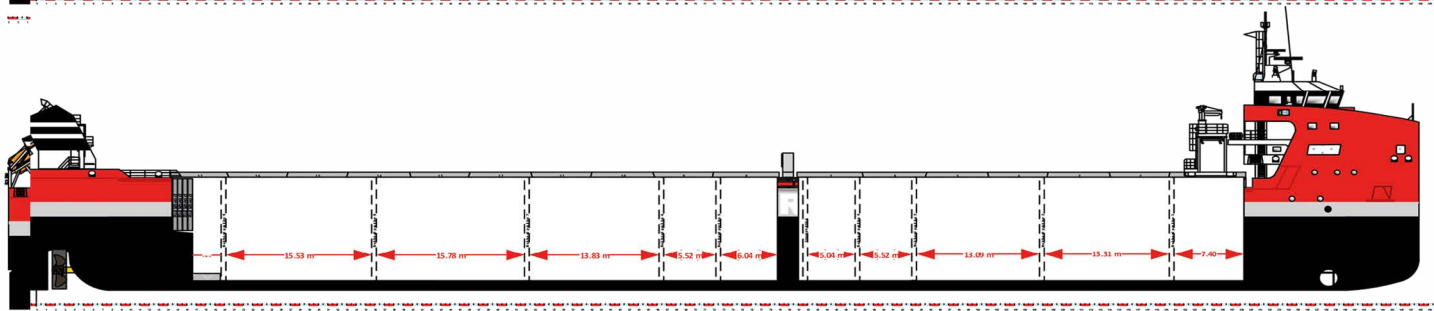
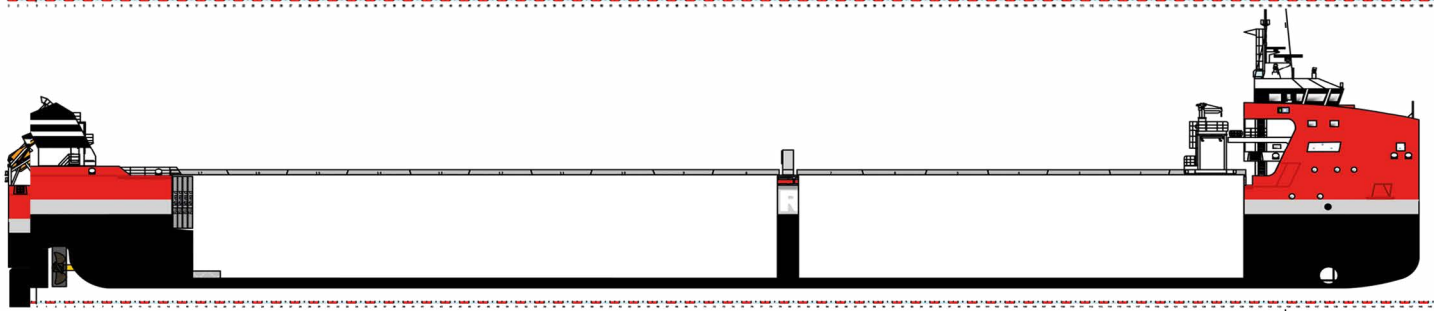
Gearless / geared	Gearless
-------------------	----------

#### FUEL OIL SPECIFICATION

HFO as per ISO 8217:2010 RMG 380  
MGO as per ISO 8217:2010 DMA  
Within ECA area t/c operation to be responsible for  
sulphur limit compliance



Particulars believed to be correct, but not guaranteed.



Wagenborg Shipping is a member of Royal Wagenborg. Founded in 1898, the company continuously invests in various means of transport to serve the needs of a broad variety of customers by sea, shallow water and road offering a complete chain of transport.

Wagenborg companies are, amongst others, involved in shipping, stevedoring, forwarding, crane rental, heavy lifting, heavy transport, oil- and gas related services, towage and passenger services. Our integrated logistics solutions are flexible and reliable, provided by our dedicated crew of more than 3,000 employees.

Royal Wagenborg has identified quality, health, safety and the environment as key factors. Wagenborg Shipping manages its quality according to the ISO 9001, ISO 14001 and AEO. Our cargo vessels are ISM and ISPS-certified.

Head office:

**WAGENBORG SHIPPING B.V.**

Marktstraat 10, 9934 CK Delfzijl, The Netherlands  
P.O. Box 14, 9930 AA Delfzijl, The Netherlands  
T +31 596 636 911  
E chartering@wagenborg.com

Agency/Clearance at Delfzijl, Eemshaven and Groningen:

**WAGENBORG AGENCIES B.V.**

Handelskade Oost 21, 9934 AR Delfzijl, The Netherlands  
P.O. Box 14, 9930 AA Delfzijl  
T +31 596 636 254  
E agency@wagenborg.com

Agency/Clearance at Amsterdam, Beverwijk and IJmuiden:

**WAGENBORG AGENCIES B.V.**

Vredeweg 36A, 1505 HH Zaandam, The Netherlands  
T +31 75 615 98 32  
E agency.amsterdam@wagenborg.com

Agency/Clearance at Rotterdam, Dordrecht and Moerdijk:

**WAGENBORG AGENCIES B.V.**

Ridderhaven 27, 2984 BT Ridderkerk, The Netherlands  
T +31 180 465 215  
E agency.rotterdam@wagenborg.com

**WAGENBORG STEVEDORING B.V.**

Handelskade Oost 21, 9934 AR Delfzijl, The Netherlands  
P.O. Box 14, 9930 AA Delfzijl  
T +31 596 636 911  
E stevedoring@wagenborg.com

**WAGENBORG PROJECTS & LOGISTICS B.V.**

Marktstraat 10, 9934 CK Delfzijl, The Netherlands  
P.O. Box 14, 9930 AA Delfzijl  
T +31 596 636 911  
E logistic@wagenborg.com

**WAGENBORG PROJECTS & LOGISTICS B.V.**

Ridderhaven 27, 2984 BT Ridderkerk, The Netherlands  
T +31 180 41 1169  
E logistic@wagenborg.com

Branch office Sweden:

**WAGENBORG SHIPPING SWEDEN AB**

Hans Michelsensgatan 1B  
P.O. Box 207, SE-201 22 Malmö, Sweden  
T +46 409 37 100  
E chartering.sweden@wagenborg.se

Branch office North America:

**WAGENBORG SHIPPING NORTH AMERICA INC.**

507 Place d'Armes, Suite 2100  
Montreal, Quebec  
H2Y 2W8  
Canada  
T +1 514 288 8282  
E info@wagenborgna.ca

Branche office Spain:

**Wave Shipping S.L.**

Calle Lira, N° 1. Esc. Izq., 1° B.  
28007 Madrid, Spain  
T +34 917 253 763  
E wave@waveship.com

