



ROYAL  
**WAGENBORG**



**S  
S  
A  
L  
O  
D**

### D-CLASS VESSELS

Dintelborg	1999
Diezeborg	2000
Dongeborg	1999

### GENERAL PARTICULARS

DWAT	
DWCC Summer	8.350 t
DWCC Winter	
GT	6.235
NT	3.340
Lenght over all	133,41m
LBPP	
Breadth over all	15,85m
Moulded depth	9,80m
Draught Summer	7,103m
Draught Winter	6,955m
Height WL-HC in ballast	7,60m
Airdraft in ballast	33,75
Built	1999 - 2000
Shipyard	Scheepswerf van Diepen
Flag	Dutch
Homeport	Delfzijl
Ice Class	1A
Class Notation	1 + HULL + MACH, General cargo ship- heavycargo (15t/m <sup>2</sup> ) -nonhomload (18t/m <sup>2</sup> ): container ship, Unrestricted Navigation + AUT- UMS, SYS-NEQ-1, MON SHAFT, ICE CLASS 1A LASHING

### ENGINE

Main engine	Wartsila 8L38, 5280 kW at 600 RPM
Propeller	Controllable pitch propeller
Bowthruster	500 kW

### INSURANCE

Classification	
P&I Club	

### HOLDS/HATCHES

Type of holds	Fully openhatch - no understow Fully box and double skinned Fully square - except outer shape 447.841 cft
Cubic Capacity	
Capacity hold 1	
Capacity hold 2	
Dimensions hold 1	41,99 x 13,2 x 10,48 m
Dimensions hold 2	53,61 x 13,2 x 10,48 m
Hatchcover type	Coops & Nieborg Pontoon Hatches

Max pressure Tanktop	
Max pressure weatherdeck	

### CARGO CRANES

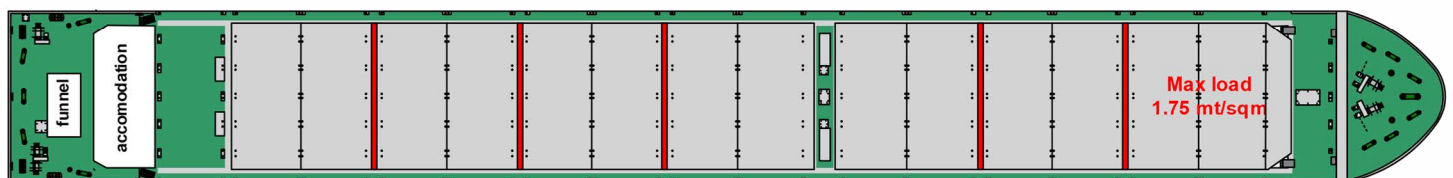
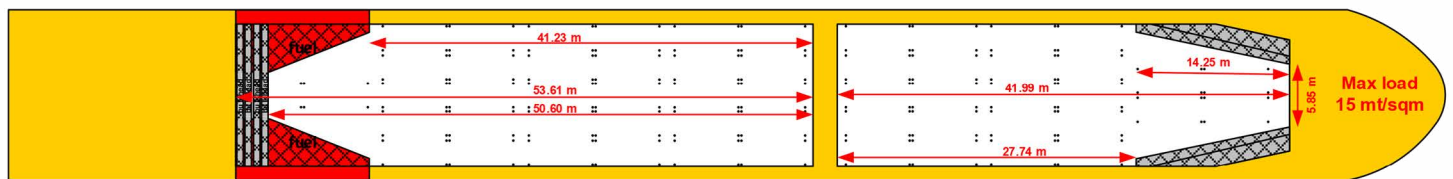
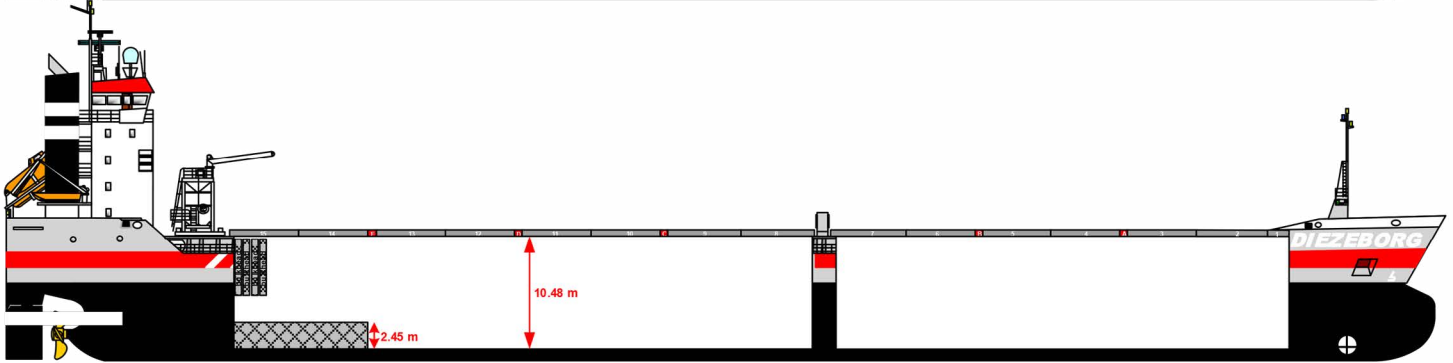
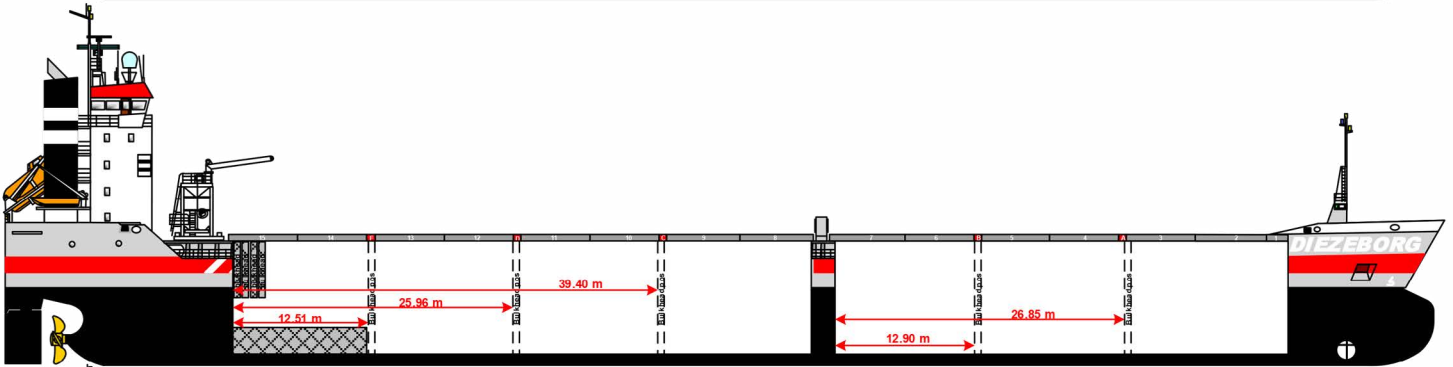
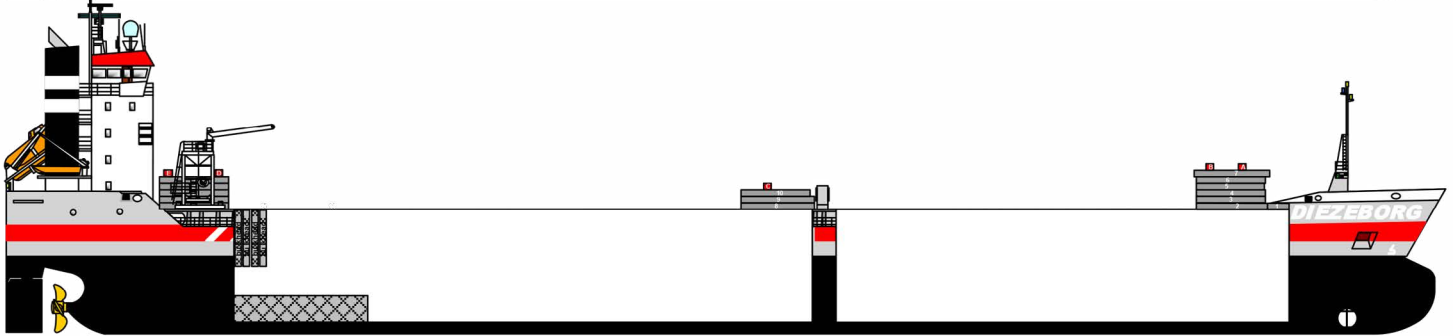
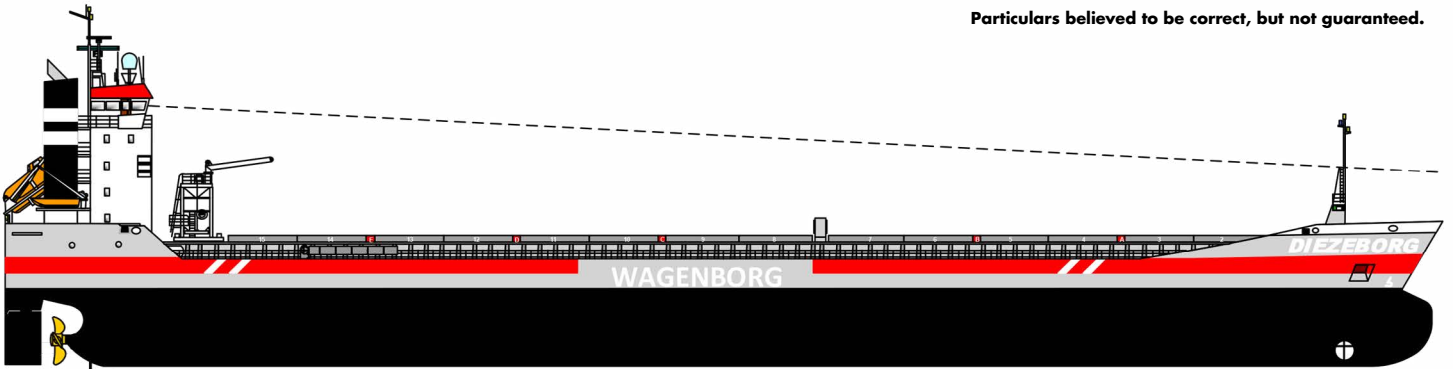
Gearless / geared

### FUEL OIL SPECIFICATION

HFO as per ISO 8217:2010 RMG 380  
MGO as per ISO 8217:2010 DMA  
Within: ECA area t/c operation to be responsible for sulphur  
limit compliance



Particulars believed to be correct, but not guaranteed.



Wagenborg Shipping is a member of Royal Wagenborg. Founded in 1898, the company continuously invests in various means of transport to serve the needs of a broad variety of customers by sea, shallow water and road offering a complete chain of transport.

Wagenborg companies are, amongst others, involved in shipping, stevedoring, forwarding, crane rental, heavy lifting, heavy transport, oil- and gas related services, towage and passenger services. Our integrated logistics solutions are flexible and reliable, provided by our dedicated crew of more than 3,000 employees.

Royal Wagenborg has identified quality, health, safety and the environment as key factors. Wagenborg Shipping manages its quality according to the ISO 9001, ISO 14001 and AEO. Our cargo vessels are ISM and ISPS-certified.

Head office:

**WAGENBORG SHIPPING B.V.**

Marktstraat 10, 9934 CK Delfzijl  
P.O. Box 14, 9930 AA Delfzijl  
The Netherlands  
T +31 596 636 911  
E chartering@wagenborg.com

Agency / Clearance at Delfzijl, Eemshaven and Groningen:

**WAGENBORG AGENCIES B.V.**

Handelskade Oost 21, 9934 AR Delfzijl, The Netherlands  
P.O. Box 14, 9930 AA Delfzijl  
T +31 596 636 254  
E agency@wagenborg.com

Agency/Clearance at Amsterdam, Beverwijk and Umuiden:

**WAGENBORG AGENCIES B.V.**

Vredeweg 36A, 1505 HH Zaandam, The Netherlands  
T +31 75 615 98 32  
E agency.amsterdam@wagenborg.com

Agency/Clearance at Rotterdam, Dordrecht and Moerdijk:

**WAGENBORG AGENCIES B.V.**

Ridderhaven 27, 2984 BT Ridderkerk, The Netherlands  
T +31 180 465 215  
E agency.rotterdam@wagenborg.com

**WAGENBORG STEVEDORING B.V.**

Handelskade Oost 21, 9934 AR Delfzijl, The Netherlands  
P.O. Box 14, 9930 AA Delfzijl  
T +31 596 636 911  
E stevedoring@wagenborg.com

**WAGENBORG PROJECTS & LOGISTICS B.V.**

Marktstraat 10, 9934 CK Delfzijl, The Netherlands  
P.O. Box 14, 9930 AA Delfzijl  
T +31 596 636 966  
E logistic@wagenborg.com

**WAGENBORG PROJECTS & LOGISTICS B.V.**

Ridderhaven 27, 2984 BT Ridderkerk, The Netherlands  
T +31 180 41 1169  
E logistic@wagenborg.com

Branch office Sweden:

**WAGENBORG SHIPPING SWEDEN AB**

Hans Michelsensgatan 1B  
P.O. Box 207, SE-201 22 Malmö, Sweden  
T +46 409 37 100  
E chartering.sweden@wagenborg.se

Branch office North America:

**WAGENBORG SHIPPING NORTH AMERICA INC.**

507 Place d'Armes, Suite 2100  
Montreal, Quebec  
H2Y 2W8  
Canada  
T +1 514 288 8282  
E info@wagenborgna.ca

Branche office Spain:

**Wave Shipping**

Calle Lira, N° 1. Esc. Izq., 1° B.  
28007 Madrid, Spain  
T +34 917 253 763  
E wave@waveship.com

