



ROYAL
WAGENBORG



**S
S
A
C
A**

A-CLASS VESSELS

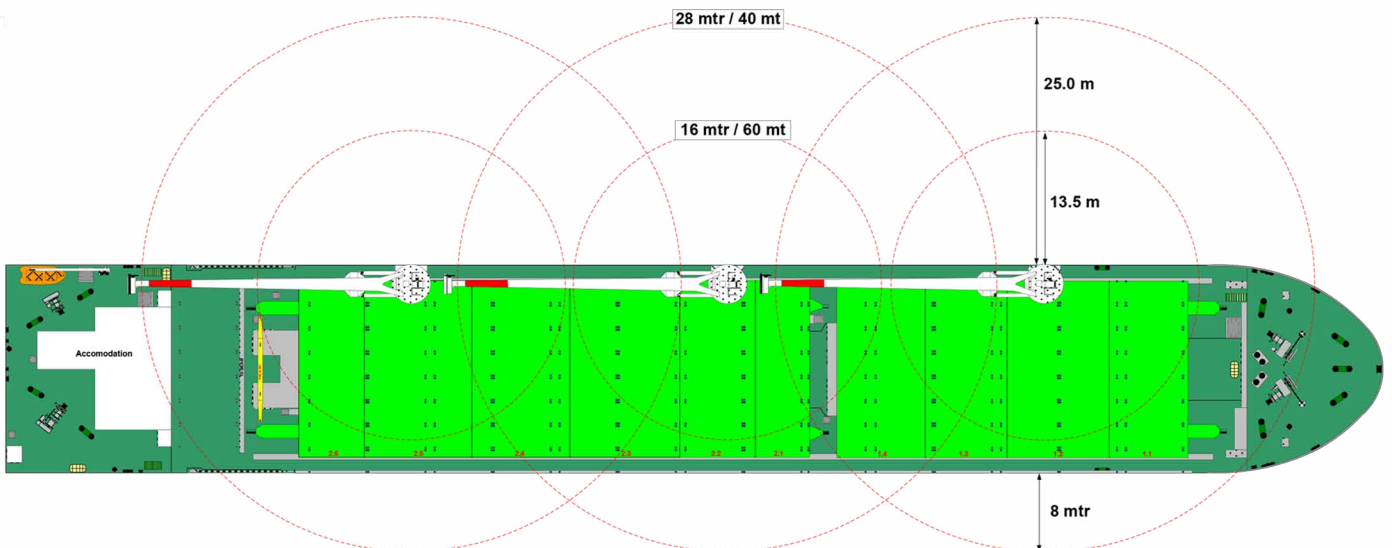
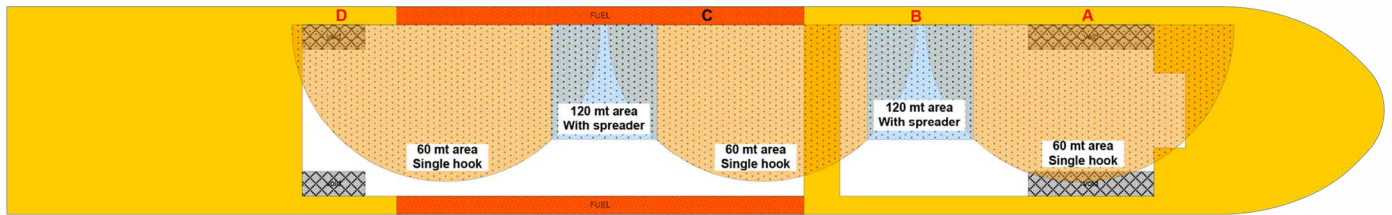
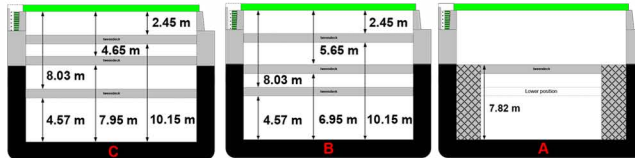
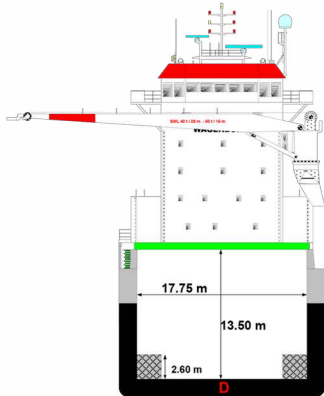
Amstelborg (*)	2006	Aragonborg (**)	2010
Arneborg (*)	2006	Andesborg (**)	2011
Amazoneborg (*)	2007	Amurborg (**)	2011
Americaborg (*)	2007	Alamosborg (**)	2011
Azoresborg (**)	2010	Adriaticborg (**)	2011
Arubaborg (**)	2010	Alaskaborg (**)	2012
Albanyborg (**)	2010	Avonborg (**)	2012
		Atlanticborg (**)	2012

GENERAL PARTICULARS

DWAT	17.323
DWCC Summer	15.750
DWCC Winter	15.550
GT	11.864
NT	5.650

Lenght over all	143,00 m
LBPP	133,36 m
Breadth over all	21,50 m
Moulded depth	13,30 m
Draught Summer	9,690 m
Draught Winter	9,505 m
Height WL-HC in ballast	10,50 m
Airdraft in ballast	35,40 m

Built	2006 - 2012
Shipyard	Hudong Zhonghua, China
Flag	Dutch
Homeport	Delfzijl
Ice Class	Finnish/Swedish 1A
Class Notation	+100A1 + LMC UM NAV1, IWS LI



ENGINE

Main engine (*)	Wärtsilä 8L46B, 7.800 kW
Main engine (**)	Wärtsilä 6L46F, 7.500 kW
Propeller	Wärtsilä/Lips, 4 blades, 4.800 mm
Bowthruster	750 kW

INSURANCE

Classification	Lloyds Register of Shipping
P&I Club	North of England P&I Association

HOLDS/HATCHES

Type of holds	Fully openhatch - no understow Fully box and double skinned Fully square - except outer shape
Cubic Capacity Hold	707.633 cft
Capacity hold 1	269.401 cft
Capacity hold 2	438.232 cft
Dimensions hold 1	35,80 x 17,75 x 13,50 m
Dimensions hold 2	52,10 x 17,75 x 13,50 m
Hatchcover type	MacGregor Navire Hydraulic steel pontoon hatches
Max pressure Tanktop	20,00 mts/m ²
Max pressure tweendeck	4,00 mts/m ²
Max pressure weatherdeck	1,75 mts/m ²

TWEENDECKS

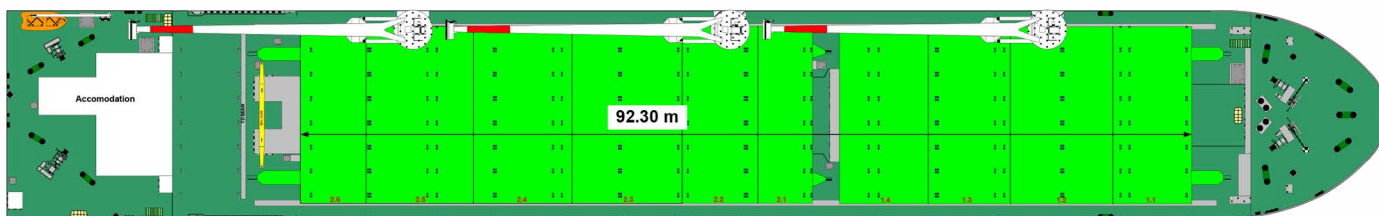
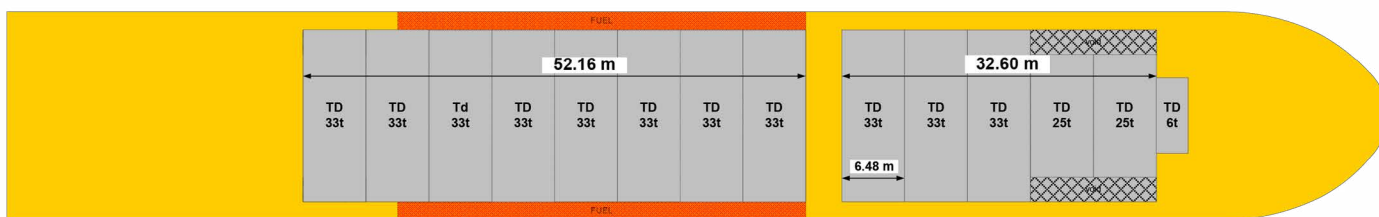
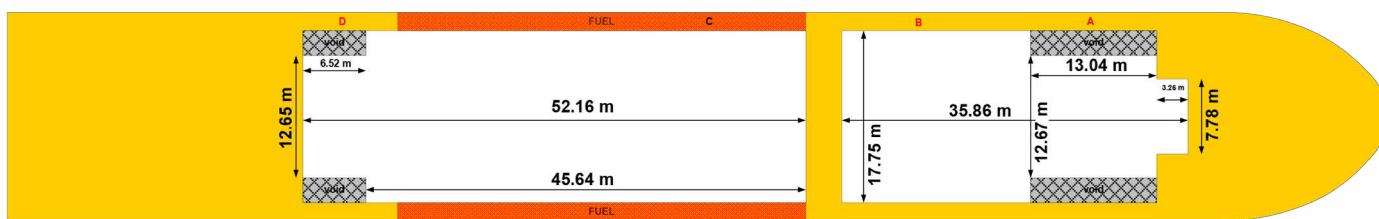
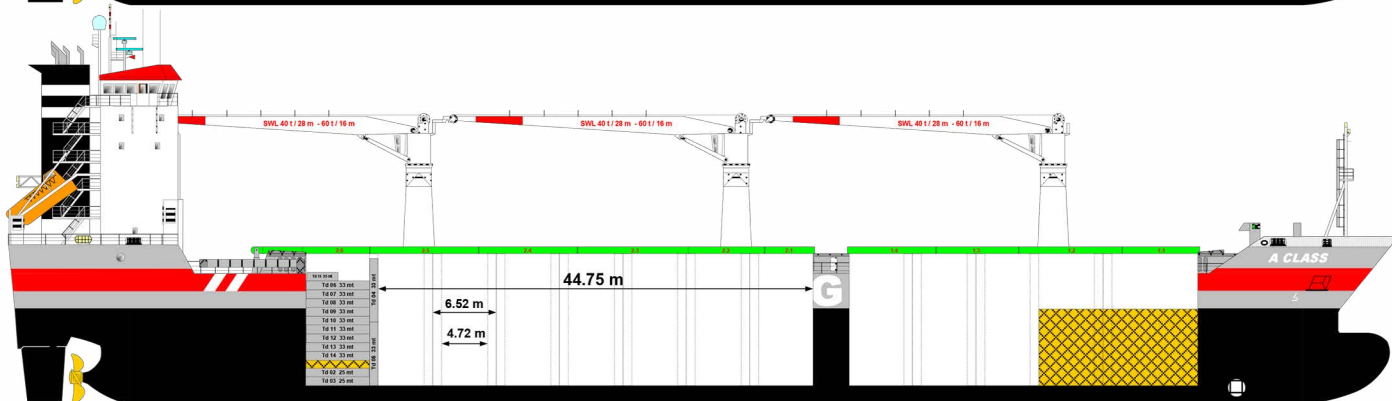
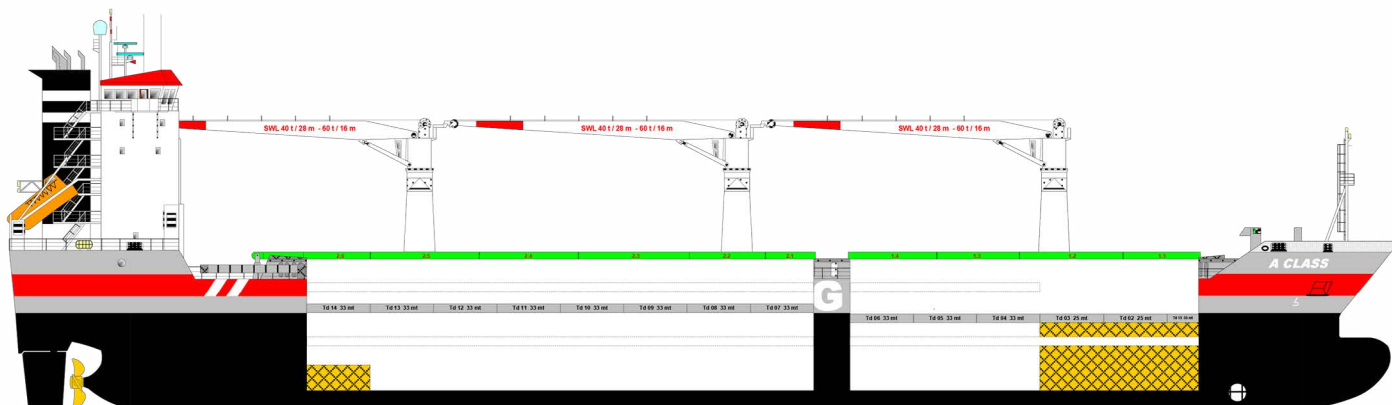
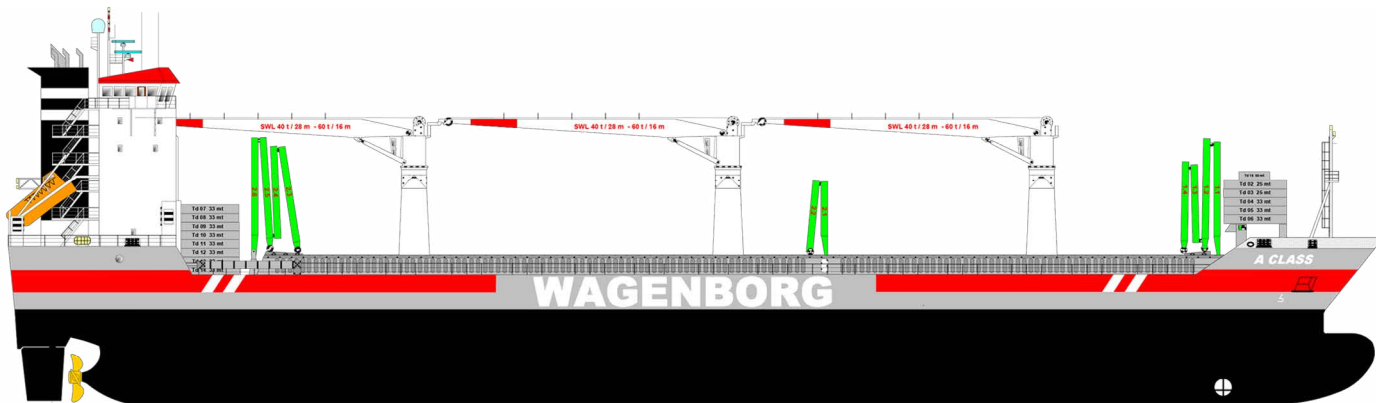
Panel nr. 1	9,90 x 3,22 x 0,90 m
Panel nr. 2 + 3	12,57 x 6,48 x 0,90 m
Panel nr. 4 - 14	17,65 x 6,48 x 0,90 m

CARGO CRANES

Gearless / geared	Geared
Lifting capacity	3 x 60 mts @ 16m

FUEL OIL SPECIFICATION

HFO as per ISO 8217:2010 RMG 380
MGO as per ISO 8217:2010 DMA
Within: ECA area t/c operation to be responsible for sulphur limit compliance



Wagenborg Shipping is a member of Royal Wagenborg. Founded in 1898, the company continuously invests in various means of transport to serve the needs of a broad variety of customers by sea, shallow water and road offering a complete chain of transport.

Wagenborg companies are, amongst others, involved in shipping, stevedoring, forwarding, crane rental, heavy lifting, heavy transport, oil- and gas related services, towage and passenger services. Our integrated logistics solutions are flexible and reliable, provided by our dedicated crew of more than 3,000 employees.

Royal Wagenborg has identified quality, health, safety and the environment as key factors. Wagenborg Shipping manages its quality according to the ISO 9001, ISO 14001 and AEO. Our cargo vessels are ISM and ISPS-certified.

Head office:

WAGENBORG SHIPPING B.V.

Marktstraat 10, 9934 CK Delfzijl, The Netherlands
P.O. Box 14, 9930 AA Delfzijl, The Netherlands
T +31 596 636 911
E chartering@wagenborg.com

Agency/Clearance at Delfzijl, Eemshaven and Groningen:

WAGENBORG AGENCIES B.V.

Handelskade Oost 21, 9934 AR Delfzijl, The Netherlands
P.O. Box 14, 9930 AA Delfzijl
T +31 596 636 254
E agency@wagenborg.com

Agency/Clearance at Amsterdam, Beverwijk and IJmuiden:

WAGENBORG AGENCIES B.V.

Vredeweg 36A, 1505 HH Zaandam, The Netherlands
T +31 75 615 98 32
E agency.amsterdam@wagenborg.com

Agency/Clearance at Rotterdam, Dordrecht and Moerdijk:

WAGENBORG AGENCIES B.V.

Ridderhaven 27, 2984 BT Ridderkerk, The Netherlands
T +31 180 465 215
E agency.rotterdam@wagenborg.com

WAGENBORG STEVEDORING B.V.

Handelskade Oost 21, 9934 AR Delfzijl, The Netherlands
P.O. Box 14, 9930 AA Delfzijl
T +31 596 636 911
E stevedoring@wagenborg.com

WAGENBORG PROJECTS & LOGISTICS B.V.

Marktstraat 10, 9934 CK Delfzijl, The Netherlands
P.O. Box 14, 9930 AA Delfzijl
T +31 596 636 911
E logistic@wagenborg.com

WAGENBORG PROJECTS & LOGISTICS B.V.

Ridderhaven 27, 2984 BT Ridderkerk, The Netherlands
T +31 180 41 1169
E logistic@wagenborg.com

Branch office Sweden:

WAGENBORG SHIPPING SWEDEN AB

Hans Michelsensgatan 1B
P.O. Box 207, SE-201 22 Malmö, Sweden
T +46 409 37 100
E chartering.sweden@wagenborg.se

Branch office North America:

WAGENBORG SHIPPING NORTH AMERICA INC.

507 Place d'Armes, Suite 2100
Montreal, Quebec
H2Y 2W8
Canada
T +1 514 288 8282
E info@wagenborgna.ca

Branche office Spain:

Wave Shipping S.L.

Calle Lira, N° 1. Esc. Izq., 1° B.
28007 Madrid, Spain
T +34 917 253 763
E wave@waveship.com

