



ROYAL  
**WAGENBORG**



0  
0  
0  
2  
F



### 12.000-CLASS VESSELS

Morgenstond I	2006*	Helga	2009
Trinitas	2007*	Anet	2010
Morgenstond II	2007*	Usselborg	2010
Jan van Gent	2009		

### GENERAL PARTICULARS

DWAT	12.016	
DWCC Summer	11.000	
DWCC Winter	10.500	
GT	8.999	
NT	4.585	
Lenght over all	142,95 m	
LBPP	135,54 m	135,06 m(*)
Breadth over all	18,90 m	
Moulded depth	10,95 m	
Draught Summer	7,945 m	
Draught Winter	7,780 m	
Height WL-HC in ballast	11,00 m	
Airdraft in ballast	35,00 m	

Built	2006 - 2010
Shipyard	Damen Shipyards
Flag	Dutch
Ice Class	Finnish/Swedish 1A
Class Notation	RL 1A, LMC, UMC SMC, SOLAS II - 2, Reg.19

### ENGINE

Main engine	MAK 6M43 Four Stroke, 6.000 kW at 500 rpm
Propeller	CCP Ø 5.000mm
Bowthruster	730 kW

### CARGO CRANES

Gearless / geared	Geared
Lifting capacity	2 x 80mts @ 14 m

### FUEL OIL SPECIFICATION

HFO as per ISO 8217:2010 RMG 380  
MGO as per ISO 8217:2010 DMA max 0,1 percent sulphur  
Within: ECA area t/c operation to be responsible for sulphur limit compliance

### INSURANCE

Classification

Lloyds Register of Shipping:  
Morgenstond I, Morgenstond II, Trinitas, Usselborg

Bureau Veritas: Jan van Gent, Anet  
UK P&I Club: Helga, Anet, Usselborg  
St. Steamship owners P&I association:  
Trinitas, Jan van Gent  
NNPI: Morgenstond I & II  
North of England P&I Club: Helga

P&I Club

### HOLDS/HATCHES

Type of holds

Fully open hatch - no understow  
Fully box and double skinned, narrow stepwise by container

609.001 cft  
235.372 cft  
373.629 cft  
40,89 x 15,80 x 12,10 m  
55,86 x 15,80 x 12,10 m

Cubic Capacity Hold

Capacity hold 1  
Capacity hold 2  
Dimensions hold 1  
Dimensions hold 2

### TWEENDECKS

Hold 1

2 x panels A type  
2 x panels B type  
1 x panel C type  
1 x panel D type  
1 x panel E type

6,93 x 15,65 m  
5,05 x 15,65 m  
3,71 x 15,65 m  
6,72 x 10,33 m  
6,16 x 5,09 m

Hold 2

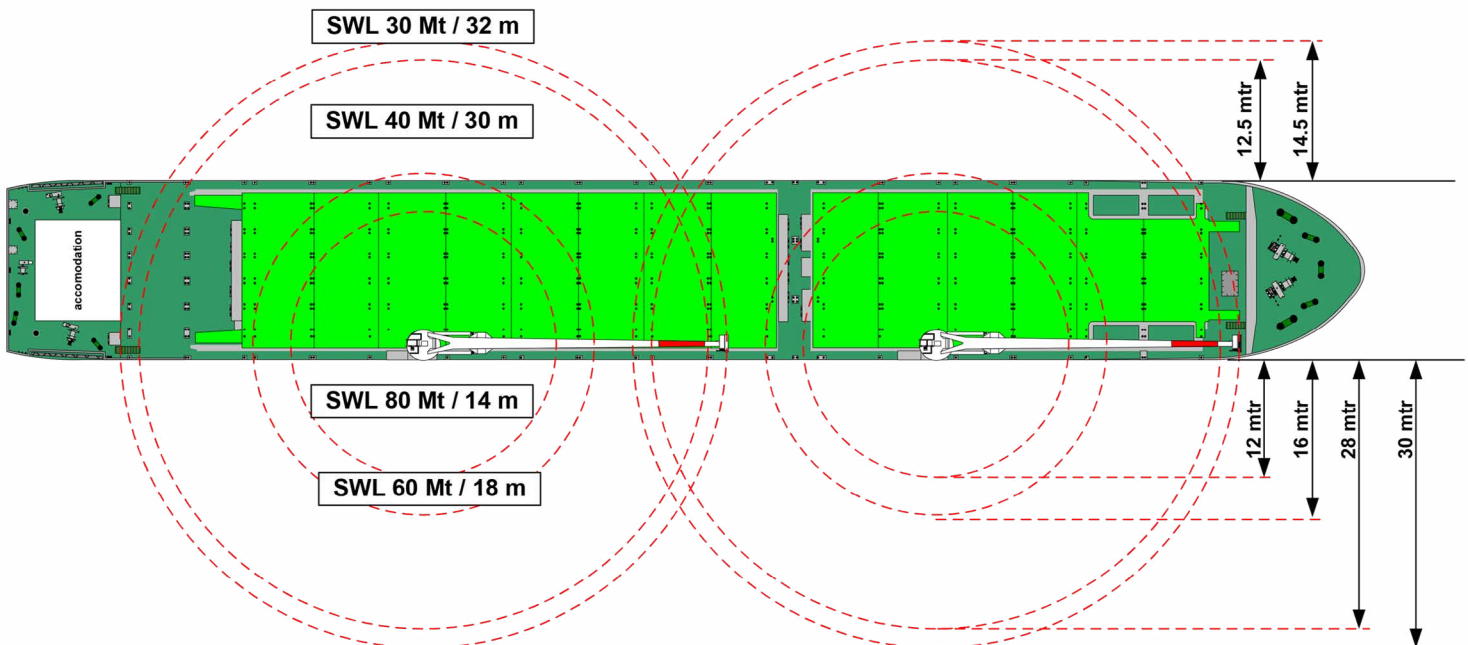
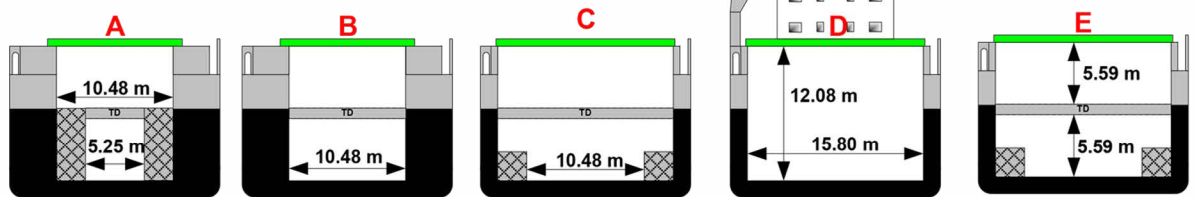
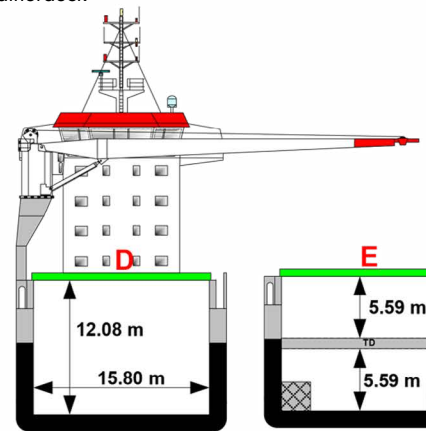
8 x panels A type

6,93 x 15,65 m  
18,00 mts/m<sup>2</sup>  
4,00 mts/m<sup>2</sup>  
1,75 mts/m<sup>2</sup>

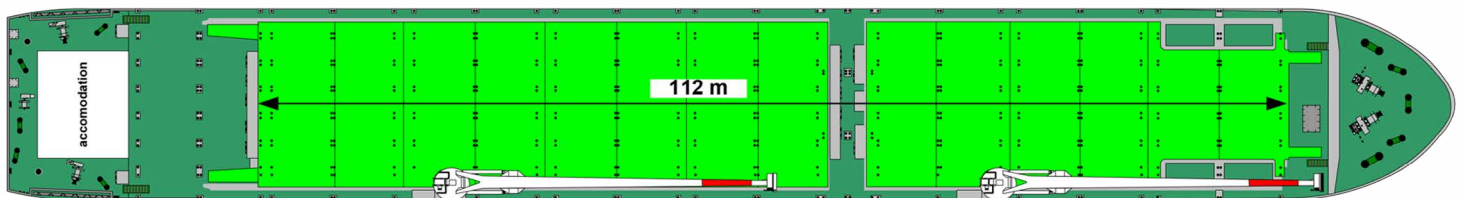
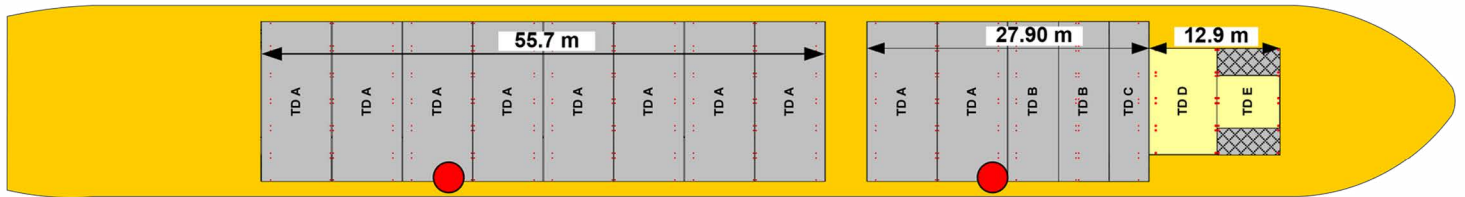
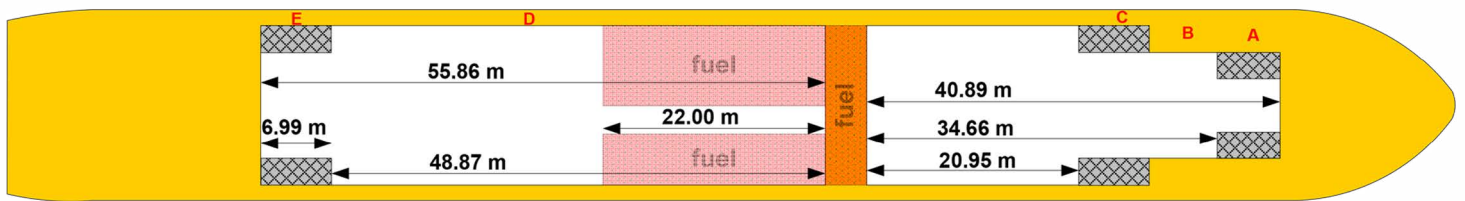
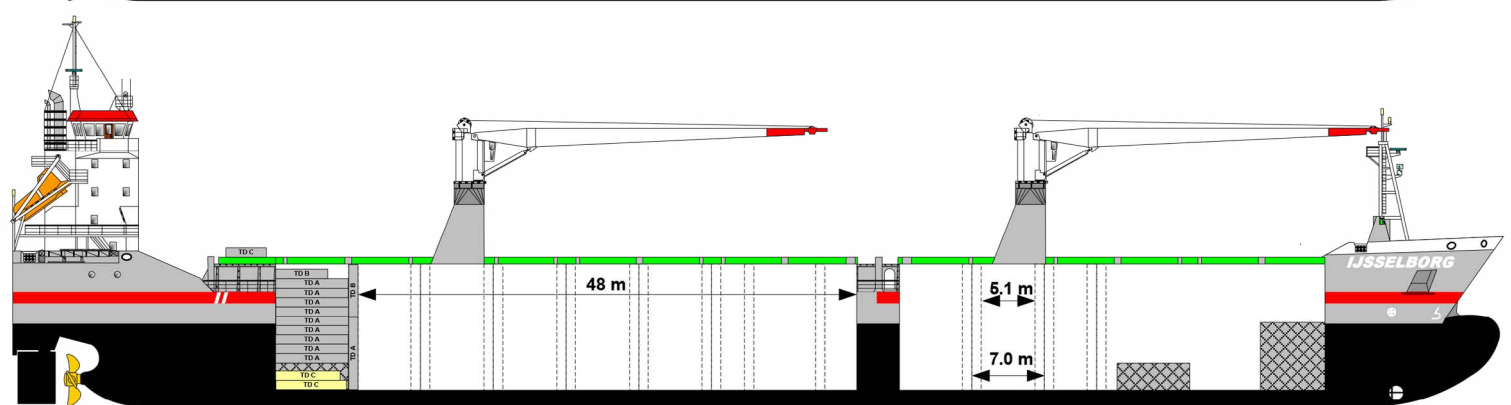
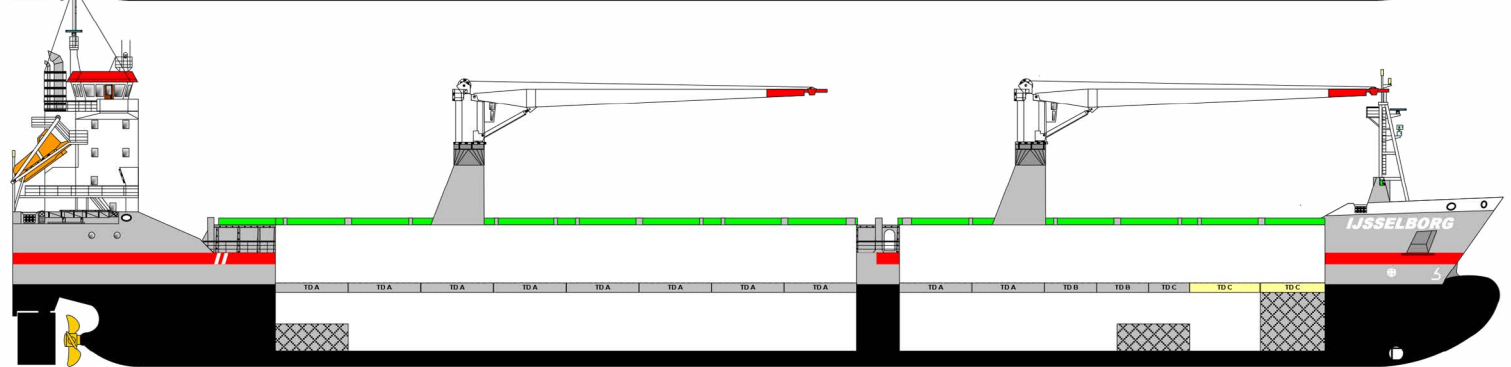
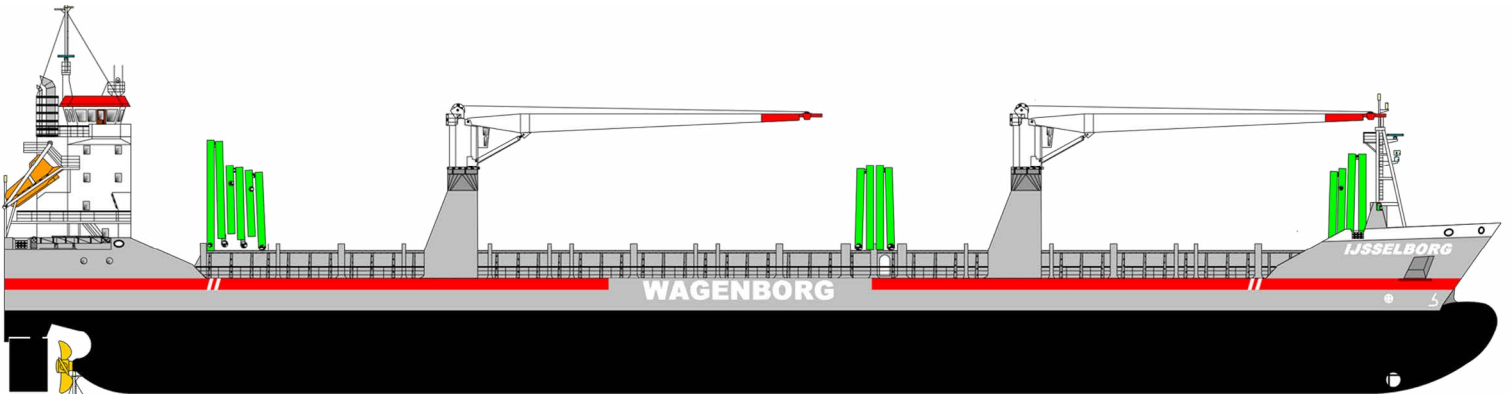
Max pressure Tanktop

Max pressure tweendeck

Max pressure weatherdeck



Particulars believed to be correct, but not guaranteed.



Wagenborg Shipping is a member of Royal Wagenborg. Founded in 1898, the company continuously invests in various means of transport to serve the needs of a broad variety of customers by sea, shallow water and road offering a complete chain of transport.

Wagenborg companies are, amongst others, involved in shipping, stevedoring, forwarding, crane rental, heavy lifting, heavy transport, oil- and gas related services, towage and passenger services. Our integrated logistics solutions are flexible and reliable, provided by our dedicated crew of more than 3,000 employees.

Royal Wagenborg has identified quality, health, safety and the environment as key factors. Wagenborg Shipping manages its quality according to the ISO 9001, ISO 14001 and AEO. Our cargo vessels are ISM and ISPS-certified.

Head office:

**WAGENBORG SHIPPING B.V.**

Marktstraat 10, 9934 CK Delfzijl, The Netherlands  
P.O. Box 14, 9930 AA Delfzijl, The Netherlands  
T +31 596 636 911  
E chartering@wagenborg.com

Agency/Clearance at Delfzijl, Eemshaven and Groningen:

**WAGENBORG AGENCIES B.V.**

Handelskade Oost 21, 9934 AR Delfzijl, The Netherlands  
P.O. Box 14, 9930 AA Delfzijl  
T +31 596 636 254  
E agency@wagenborg.com

Agency/Clearance at Amsterdam, Beverwijk and IJmuiden:

**WAGENBORG AGENCIES B.V.**

Vredeweg 36A, 1505 HH Zaandam, The Netherlands  
T +31 75 615 98 32  
E agency.amsterdam@wagenborg.com

Agency/Clearance at Rotterdam, Dordrecht and Moerdijk:

**WAGENBORG AGENCIES B.V.**

Ridderhaven 27, 2984 BT Ridderkerk, The Netherlands  
T +31 180 465 215  
E agency.rotterdam@wagenborg.com

**WAGENBORG STEVEDORING B.V.**

Handelskade Oost 21, 9934 AR Delfzijl, The Netherlands  
P.O. Box 14, 9930 AA Delfzijl  
T +31 596 636 911  
E stevedoring@wagenborg.com

**WAGENBORG PROJECTS & LOGISTICS B.V.**

Marktstraat 10, 9934 CK Delfzijl, The Netherlands  
P.O. Box 14, 9930 AA Delfzijl  
T +31 596 636 911  
E logistic@wagenborg.com

**WAGENBORG PROJECTS & LOGISTICS B.V.**

Ridderhaven 27, 2984 BT Ridderkerk, The Netherlands  
T +31 180 41 1169  
E logistic@wagenborg.com

Branch office Sweden:

**WAGENBORG SHIPPING SWEDEN AB**

Hans Michelsengatan 1B  
P.O. Box 207, SE-201 22 Malmö, Sweden  
T +46 409 37 100  
E chartering.sweden@wagenborg.se

Branch office North America:

**WAGENBORG SHIPPING NORTH AMERICA INC.**

507 Place d'Armes, Suite 2100  
Montreal, Quebec  
H2Y 2W8  
Canada  
T +1 514 288 8282  
E info@wagenborgna.ca

Branche office Spain:

**Wave Shipping S.L.**

Calle Lira, N° 1. Esc. Izq., 1° B.  
28007 Madrid, Spain  
T +34 917 253 763  
E wave@waveship.com



**sign of solutions**