



ROYAL
WAGENBORG



WAGENBORG

Wagenborg Offshore

As an international offshore specialist and with many years of experience in the global oil and gas transport business, Wagenborg Offshore has committed professionals at its heart, carrying out complex logistic projects worldwide.

Wagenborg Offshore is a specialist in shallow water transport and has been operating in the Caspian Sea for decades with its dedicated vessels. The company also has vast experience and knowledge of ice navigation in Baltic and Scandinavian waters.

Wagenborg Offshore has state-of-the-art equipment and technologies that comply with the highest quality industry standards.

GENERAL

Yard	Holland Shipyards
Year	2011
Classification	BV, I +HULL, •MACH, special service, Accomodation Barge-no propulsion Sheltered area/ (offshore sheltered enclosures - Caspian shelf) Hs max 0.5
mtr	
Flag	Republic of Kazakhstan

DIMENSIONS

Length overall:	135.00 m
Length dwt:	129.60 m
Breadth over all:	14.20 m
Breadth (moulded):	14.15 m
Depth:	4.10 m
Deadweight:	3184.7 mt
Draught Max (summer):	3.50 m
Gross Tonnage:	6029 GT
Nett Tonnage:	1809 NT

CAPACITIES

Fuel oil bunkers :	111.16 m ³
Fuel set and day tanks:	29.90 m ³
Bilge Water tanks:	20 m ³
Potable water:	640.0 m ³
Cargo Deck strength:	5 t/m ²
Water Ballast:	70 m ³
Treated Water tanks:	1454.0 m ³
Sludge:	5.0 m ³

ACCOMMODATION

Complement:	600 persons
Cabins:	2 double cabins 151 four bed cabins
Other facilities:	hospital, Citadel function with BA plugs on aft deck, day-/messroom and wheelhouse, Offices, Fitness, Laundry, Incinerator 850 kW, Hospital, Bar,

HEAT/COLD SYSTEM

HVAC system inside the accomodation is designed for:	
Summer:	outside +40C°/ 70% RH inside +27C°/ 50% RH
Winter:	outside -36C° inside +18C°

MACHINERY / PERFORMANCE

Aux Diesel Generators	4XSCANIA DI 16 55M
Rating	426 kW
Voltage	3 ph 550 VAC / 50 Hz
Emergency Diesel Generator	SISU 49 DTG
Rating	74 kW
Voltage	3 ph 79 VAC / 50 Hz

DELIVERY RATES

Fuel oil:	2X6 m ³ / hr
Sewage/Treated Water:	2XVictor Pumps S108(210) G31BB9(160)+F 135m ³ /hr/ 4" TODO
Freshwater:	4XCAT PUMPS 3541 10,2 m ³ /hr

DECK EQUIPMENT

Aft Deck

Anchor/mooring winch:	Menarom P. E. C. AMV-DRC-E32C
Deck crane	2XHS Marine 10 ton @ 10 m
Reefer Container Sockets	2x
Stern Roll	Optional

Fore Deck

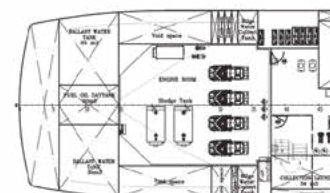
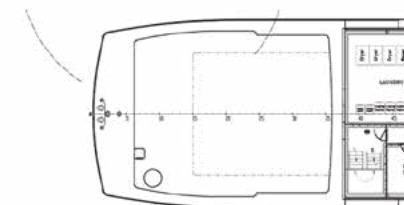
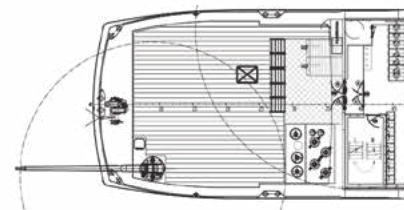
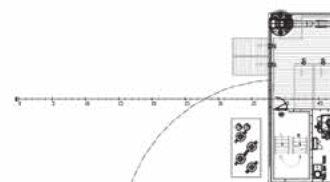
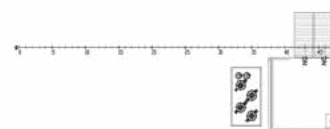
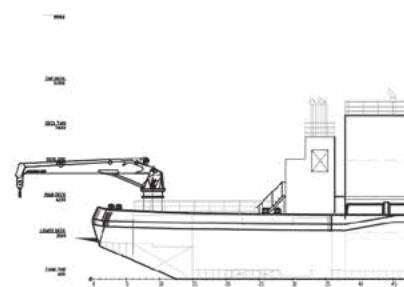
Anchor/mooring winch	Van Wijk B.V. Smit bracket
----------------------	----------------------------

SAFETY EQUIPMENT

MOB boat CAP	- 360 with outboard engine Mercury 15M
Life jackets	658

COMMUNICATIONS

2XVHF Marine IC-M411
3XTron TR20 GMDSS



WAGENBORG OFFSHORE

P.O. Box 14, 9930 AA Delfzijl
Marktstraat 10, 9934 CK Delfzijl
The Netherlands
T +31(0)596 636 911
F +31(0)596 636 250

E businessdevelopment@wagenborg.com

