



ROYAL
WAGENBORG



WAGENBORG BARGE 7/8/10

GENERAL

Name Wagenborg Barge 7
 Owner Wagenborg Towage
 Type Pontoon, Ocean going ballastlike deck cargo
 Classification Bureau Veritas, I HULL MACH, Pontoon, Unrestricted navigation
 Port of Registry Delfzijl, The Netherlands
 Flag Dutch
 Built 2010

MAIN DIMENSIONS

LOA 100 m
 BOA 33 m
 Depth (mld.) 7,6 m
 Deck area (~) 3270m²
 Draught (mld.) 6,048m

TONNAGE

GT 6745
 NT 2023
 Lightweight 2990t
 Deadweight 15530t
 Deck load (limited) 20 t/m²
 Deck load (uniform) 15 t/m²
 Deck load (Sea) 10 t/m²

LOAD CAPACITY

Longitudinal bulkhead 100t/m1
 Transversal deck frame 150t/m1
 Deck column 400t/2m1
 Side shell column 350t/2m1

MOORING ARRANGEMENT

Bollards 10 x 50t capacity
 Panama chocks 10 x
 Mooring 8 x mooring wire 120mtr Ø10"

TOWING ARRANGEMENT

4x Smit towing brackets 200t incl. fairleaders;
 1x Forerunner stud link chain 10m x Ø60mm, 200t;
 2x Bridle stud link chain 25m x Ø60mm, 200t;
 3x Shackle Green Pin 120t;
 1x triangle plate, 200t;
 1x Retrieving wire 40m x Ø25mm + 25t shackle;
 1x Bridle hydraulic retrieving winch 15t x 7m/min. 20t stall pull;

Emergency Towing:

2x bridle stud link chain 25m x Ø60mm 200t (one connected, 1 spare);
 1x Shackle Green Pin 120t;
 1x Steel wire 80m x Ø64, 260t MBL.;
 1x polypropylene wire 100m x Ø8", 46t MBL;
 1x buoy Ø 1mtr;

ANCHOR SYSTEM

Anchor 5t stockless bower anchor
 Anchor wire 600m x Ø40mm / Ø76 stud link chain
 Anchor winch 40t x 9m/min. hydraulic operated.

POWER GENERATION SYSTEM

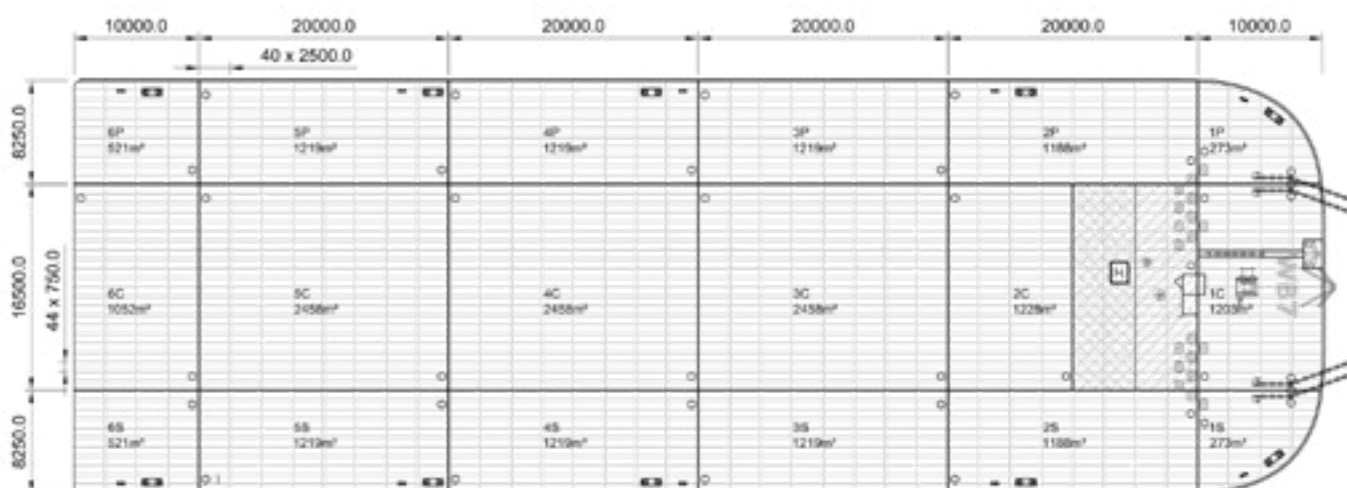
Generator: 1x 80kW, 100kVA, 480V, 3 phase 60Hz, 3-wire, 0,8PF diesel engine driven.
 Sludge pump Oily water / Bilge pump 3 m³/hr. x 30 m head 1.1 kW, electrical motor driven

BALLAST SYSTEM

Pump 1x internal ballast pump 1200m³/hr. x 18 m head, NPSHr=1.7m, driven by 89kW diesel engine.



OUTBOARD PROFILE



Particulars believed to be correct, but not guaranteed.